



MODEL RV

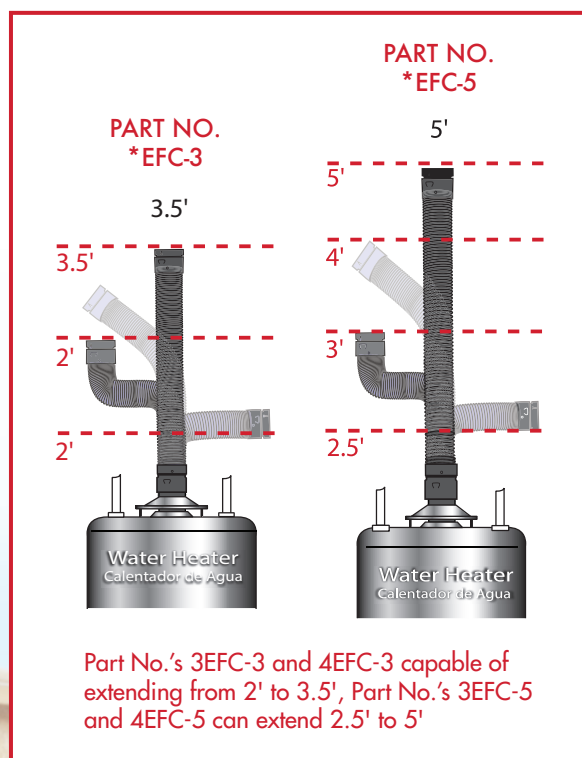
MODEL EFC EXPANDABLE FLEXIBLE GAS VENT CONNECTOR



The Selkirk® Model EFC Expandable Flexible Gas Vent Connector is designed to simplify connections between gas-fired appliances and rigid Type B Gas Vent

Feature

- Eliminates the guesswork for a simple & quick installation
- Expands 2' to 3.5' or 2.5' to 5'
- Integrated Draft Hood Connector
- Limited Lifetime Warranty
- 360° Flexibility



Contact Us! (USA)

selkirkcorp.com
1.800.992.VENT (8368)
info@selkirkcorp.com



Contact Us! (CA)

selkirkcorp.ca
1.888.SELKIRK (735.5475)
cscanada@selkirkcorp.com



Visit our NEW website! www.selkirkcorp.com, www.selkirkcorp.ca for links to catalogs, submittal, performance data, sizing guides, calculators, brand merchandise, testimonials, and more!

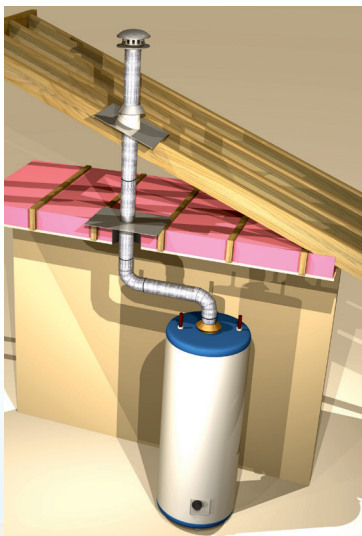


MODEL EFC EXPANDABLE FLEXIBLE GAS VENT CONNECTOR

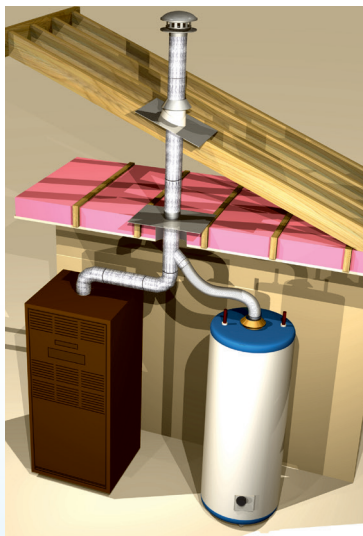
EXPANDS

**2' to 3.5' or
2.5' to 5'**

We make connecting to Type B Gas Vent... Simple.



Single Vent



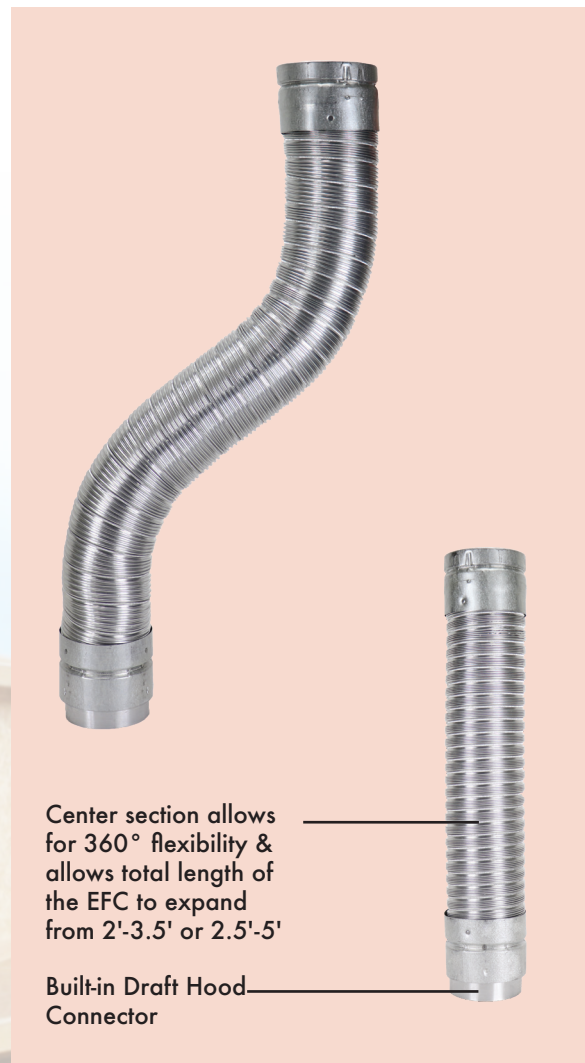
Combined Vent

The Selkirk® Model EFC Expandable Flexible Gas Vent Connector is designed for use with gas-fired appliances equipped with draft hoods and other appliances listed for use with Type B Gas Vent.

This Model EFC Expandable Flexible Gas Vent Connector system eliminates the need for elbows and greatly simplifies most gas appliance vent installations.

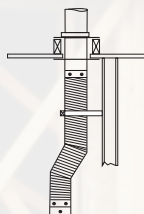
The Model EFC is available in 3" & 4" diameters and can expand from two feet (2') to three and a half feet (3.5') or from two and a half feet (2.5') to five feet (5').

Size	Product No.	Part No.	Description
3"	173036	3EFC-3	3" (2'-3.5') Flex Connector
3"	173060	3EFC-5	3" (2.5'-5') Flex Connector
4"	174036	4EFC-3	4" (2'-3.5') Flex Connector
4"	174061	4EFC-5	4" (2.5'-5') Flex Connector

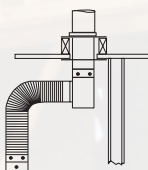


Be sure to read the Model EFC installation instructions carefully.

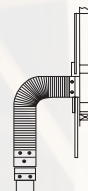
Typical EFC Flexible Gas Vent Connector Installations.



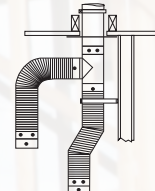
OFFSET THRU CEILING



90° OFFSET W/TEE



THRU THE WALL TO
OVAL TYPE B GAS VENT



COMBINED VENT
THRU CEILING

