

FIRE-RATED BUILDING VENTILATION DUCT JUST GOT BETTER!

Save time and money on your next project and ask for Selkirk's
industry-leading all-in-one Ventilation Duct:

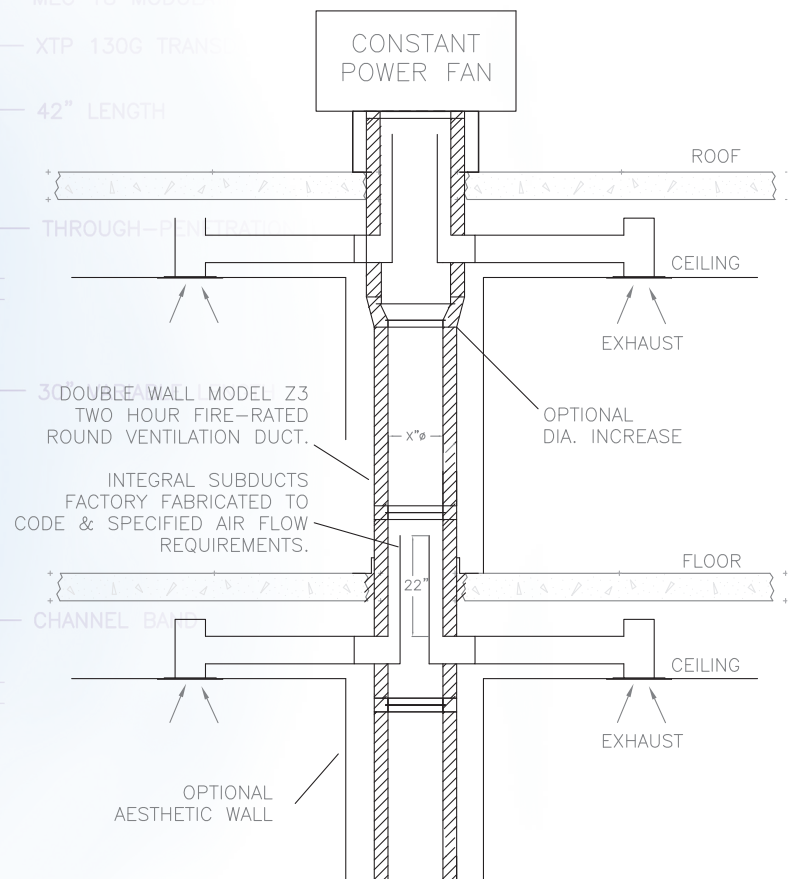
- UL/ULC classified 2-hour fire rating
- Factory built modular pressure stack design for consistent high quality and durability
- Eliminates need for separate fire-rated shaft wall construction and field fabricated ductwork (single wall duct design available for existing shaft walls)
- Low material and labor costs
- Simple and quick to install
- Available with one or more integral subducts – ideal for clothes dryers, bathroom fans or range hoods
- Limited Lifetime Warranty



A southeastern customer stated a large job, which required **20 individual fifteen-story shafts**, **saved about \$100,000** in materials alone by using this **all-in-one product**.



TYPICAL APPLICATION MULTI-APPLIANCE / MULTI-STORY TENANT BUILDING



US: 1.800.848.2149
CA: 1.888.735.5475
selkirkcommercial.com



ENGINEERING TOMORROW'S SOLUTIONS TODAY.

SELKIRK
STRONG.



Subduct installation in major University

Applications

In multi-story tenant spaces, the exhaust ducts from domestic kitchen, bathroom, or laundry room appliances often get merged into a common ducted fire-rated exhaust shaft.

These types of installations require individual fabricated subducts or fire dampers mounted to a common duct which is inside of a rated shaft. This configuration is both costly and complicated.

A Better Solution

Selkirk's modular, fire-rated ventilation duct/subduct offers a better way to install multi-story exhaust systems. Similar to the design and installation of factory-built boiler flue pressure stack and grease duct, the all-in-one ventilation duct saves valuable time and money compared to the installation of separate fire-rated wall construction and field fabricated ductwork, and is backed by Selkirk's Limited Lifetime Warranty.

External Fire Engulfment Test

Fire exposed duct:

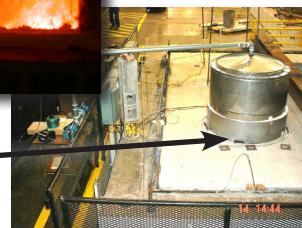


Assembly Inside
External Fire
Engulfment Test

- Exposed to external fire for 2 hours in large furnace getting to 1850°F
- Must maintain structural integrity

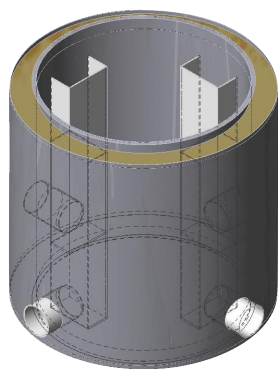


View into furnace during engulfment test



Unexposed side of fire engulfment test assembly (fire stop):

- Must meet temperature requirements on this side
- Duct under negative pressure during fire engulfment



MULTIPLE APPLIANCE
OUTLETS AVAILABLE



FOR OVER 80 YEARS, SELKIRK HAS BEEN THE LEADING MANUFACTURER OF CHIMNEY, VENTING AND AIR DISTRIBUTION PRODUCTS. TIME-TESTED COMMERCIAL AND INDUSTRIAL INSTALLATIONS THROUGHOUT NORTH AMERICAN AND GLOBALLY.



US: 1.800.848.2149
CA: 1.888.735.5475
selkirkcommercial.com

SELKIRK
STRONG.