



Models PS/IPS

Stainless Steel Double Wall
Positive Pressure Venting Systems

Special Gas Vent
Applications



Selkirk Commercial Models PS/IPS are modular, prefabricated venting systems featuring quick assembly, pressure-sealing capabilities and temperature ratings up to 550 °F for Special Gas Vent applications, with low clearance to combustibles.

SPECIAL GAS VENT APPLICATIONS

- Boilers
- Water Heaters
- Furnaces



Tested and listed to
UL1738/ULC-S636



System Overview

Selkirk Model PS and IPS are modular, prefabricated venting systems which embody flanged joints designed for both quick assembly and pressure-sealing capabilities. They offer a combination of insulated venting components as well as the structural accessories needed for support and attachment to building structures.

Standard gas-carrying venting parts are usable for category I, II, III, & IV Boiler, Water Heater, and Furnace applications.

Features and Benefits

- Factory-built for high quality, durability and long life
- Stainless steel double-wall construction with up to 4" ceramic fiber insulation for strength and stringent temperature requirements
- Safety tested and listed to multiple UL standards, signifying compliance with U.S. and Canadian codes
- 5" to 48" diameters (ID) to fit the wide range of commercial applications and customer specifications
- Array of components and accessories designed to make a complete installation simple and quick
- Selkirk 5-year limited warranty for Special Gas Vent applications



Complete Line of Fittings

Fittings include various elbows, tees, supports and terminations, as well as a variety of accessory fittings designed to make installation simple and quick.

Each component is shipped complete and ready for installation. Each ordered part includes Inner Vee Bands, Outer Channel Bands and all the necessary hardware.

All items included with each order are listed in this catalog under the part description.

Exceeding the Requirements

Selkirk, inventors of the positive pressure system concept, far exceeds the requirements of codes and other manufacturers. Results of our testing programs illustrate this fact.

Leak Tests

Selkirk conducted system pressure testing (to 15" w.c.) against leakage tests in UL1738/ULC-S636.

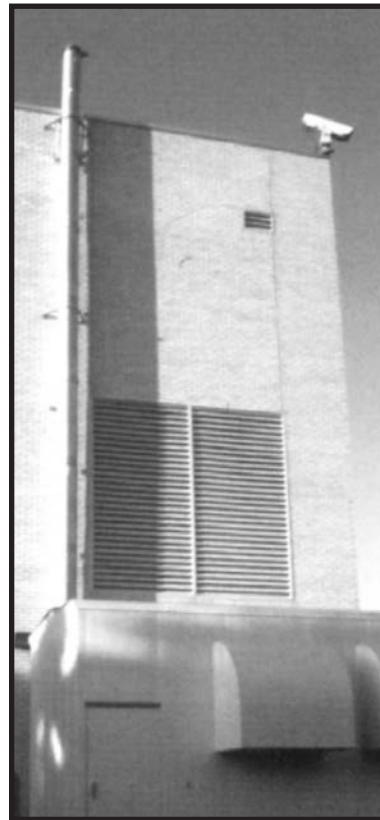
Seismic Tests

We further demonstrated the superiority of the Model PS and IPS concept by conducting seismic load tests. These tests proved the structural integrity of our products under severe stress by showing that a guyed stack measuring 20 inches in diameter and exceeding 10 feet above the guying location, per our UL testing, could withstand the rigors of all seismic zones.



Structural Tests

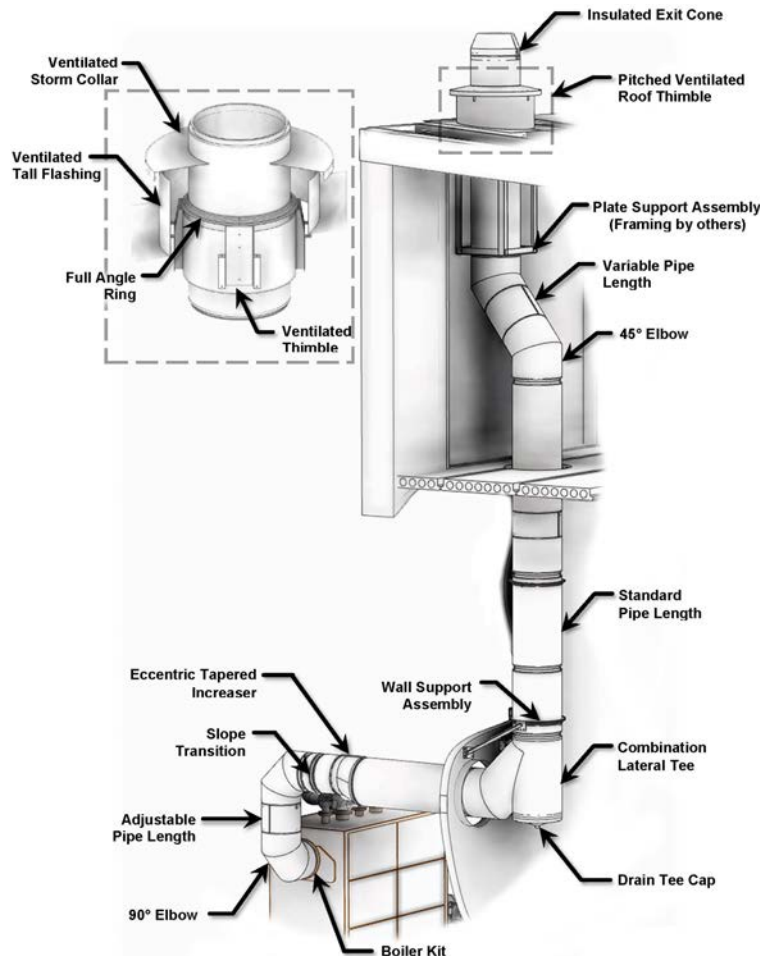
Selkirk recently tested for greater freestanding limits (termination height above a guide point). These tests, simulating stack performance under 110 mph wind conditions, again demonstrated the superiority of Selkirk products.



Guide to Component Parts

This page illustrates some of the major parts described on pages 8-30.

Product	Code	page	Product	Code	page	Product	Code	page
Joint Assembly Parts			Double Wall Fittings (cont)			Roof Penetrations		
Overlapping Vee Band	VB	8	Clean Out Tee Cap	TCN	14	Storm Collar	SC	23
Alignment Sleeve	AS	8	15° Elbow	EL15	14	Tall Flashing	TF	23
Channel Band	CB	8	30° Elbow	EL30	15	Pitched Tall Flashing	PTF	23
Half Channel Band	HCB	8	45° Elbow	EL45	15	Ventilated Thimble	THB	24
Special Gas Vent Sealant	SGV-550	8	90° Elbow	EL90	16	Ventilated Tall Flashing	VTF	24
Double Wall Pipe			Eccentric Increaser	EOT	16	Ventilated Storm Collar	VSC	24
59.13" Pipe Length	59	10	Tapered Increaser	OT	17	Ventilated Thimble Assembly	MVT	24
42" Pipe Length	42	10	Step Increaser	OS	17	Ventilated Support Assembly	MRS	25
30" Pipe Length	30	10	Drain Section	DS	18	Pitched Ventilated Thimble	PVT	25
18" Pipe Length	18	10	Support/Guide Accessories			Terminations		
Adjustable/Variable Pipe			Half Angle Ring	HR	19	Closure Ring	CR	26
30" Adjustable Pipe	AG30	10	Full Angle Ring	FR	19	Stack Cap	SK	26
18" Adjustable Pipe	AG18	10	Plate Support Assembly	PA	19	Exit Cone	EC	27
30" Variable Pipe	VL30	11	Wall Support Assembly	WA	19	Rain Cap	CCA	27
18" Variable Pipe	VL18	11	Wall Guide Assembly	WG	20	Miter Cut	MC	28
Double Wall Fittings			Floor Guide Assembly	FG	20	Miscellaneous		
90° Tee	MT	11	Support Strap	SS	20	Guy Section	GS	29
45° Tee - Lateral	JL	12	Connection Accessories			Through-Penetration Fire Stop	TPF	29
Combination Lateral Tee	CL	12	Boiler Kit	BK	21	Note: For details on parts usage, refer to the Selkirk installation instructions.		
90° Wye	JY	13	Seal Ring	SR	21			
Drain Tee Cap	TC	13	Clamp Flange	CF	21			
			Flanged Hood Transition	TS	22			
			Unflanged Hood Transition	TSU	22			
			Fan Adapter	FA	22			



Model PS vs. Model IPS



OD Calculation	
Model(s)	OD (Inches)
PS, IPSC1	OD=ID+2
IPSC2	OD=ID+4
IPS-Z3	OD=ID+6
IPSC4	OD=ID+8

Understanding Product Codes and Part Numbers (Example: 6IP316/316-AG30C2)

All parts manufactured by Selkirk are identified by a series of numbers and letters which describe their makeup and function.

Here is how to interpret the Part Number designation for Model PS and IPS products.

1. It begins with the pipe or fitting's internal diameter (in inches) such as 6, 22, 36, etc.
2. This is followed by the Model designation, P for air-insulated (Model PS), or IP for parts that are fiber insulated.
3. Next, is the product's Material designation, 316/316 or 316/Alum. The first number indicates the material of the inner wall, while the second half indicates the material of the outer wall, if stainless. If aluminized steel outer wall (Alum), the part number will indicate the inner wall only.
4. Then, following a long dash, the product Code is listed, such as AG30, JY, or MVT. If the product is air insulated, the product identification ends with this code.
5. Finally, when a product is fiber insulated, a designation is added at the end to indicate insulation thickness. C1 means a thickness of 1-inch; C2, 2-inches; Z3, 3-inches; C4 4 inches.

(For comparison, see photos above.)

Thus, the Ordered Part Number for a 30-inch Adjustable Pipe, with a 6-inch I.D., made of 316 Stainless Steel inner and aluminized steel outer, packed with 2-inch ceramic fiber insulation, is listed:

6IP316/316-AG30C2

* Note: For products with reduction or increaser parts, the part number changes as follows:

MT and JL - Diameter of Body listed in front of Model P or IP.
Diameter of Snout listed in front of Code designation.

Example - For a Manifold Tee with a 42" dia. Body and 30" dia. Snout:

42P316-30MT

OT and OS - Smaller diameter listed first (before Model designation)
Larger diameter listed before Code designation

Example - For a Tapered Increaser with an 8" to 16" dia. Body:

8P316-16OT

Overlapping Vee Band

Code:
VB

Vee Band for connecting inner 1/2" rolled flanges. Capable of holding 15" w.c. of pressure when properly installed.



Materials Available:

All Stainless Construction

Notes:

- 1.VB's are a one or two-piece design. Included with pipe sections.
- 2.Model PS part used for all IPS applications.

Alignment Sleeve

Code:
AS

Used in centering adjacent components in horizontal and vertical orientations to facilitate installation.



Materials Available:

All Stainless Construction

Notes:

- 1.AS included with pipe sections.

Channel Band

Code:
CB

Used to seal the Outer Jackets of two adjoining components.



(CB height is 4 3/4")

Materials Available:

Aluminized Steel	316
------------------	-----

Notes:

- 1.Ceramic fiber insulation provided for IPS models with the CB and HCB.

Half Channel Band

Code:
HCB

Used to seal the Outer Jackets of two adjoining components when the VB must remain open (such as PA's).



Materials Available:

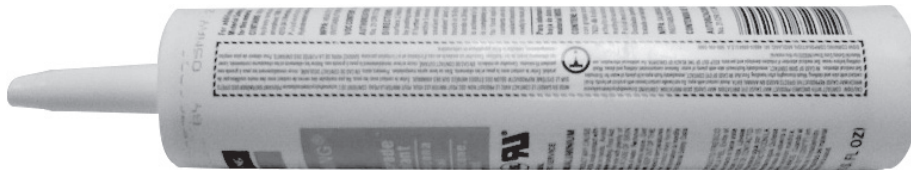
Aluminized Steel	316
------------------	-----

Notes:

- 1.Ceramic fiber insulation provided for IPS models with the CB and HCB.

Sealant Code: SGV550

SGV550 Sealant is for 550° F. maximum flue gas temperatures, and is applied to the VB and pipe flange before connecting two Inner Pipes at installation.



Sealant Coverage

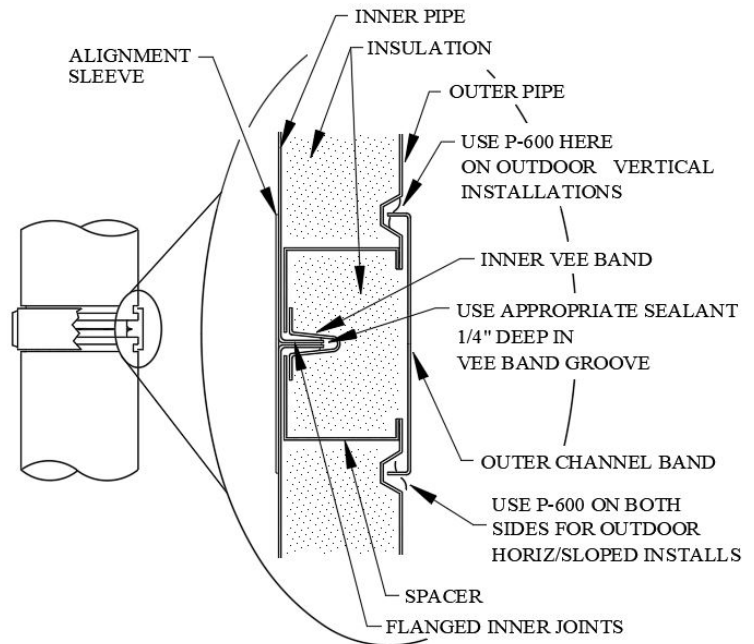
Expected Number of Joints Sealed Per Tube

Inner Dia. (inches)	SGV550
5/6	5
8/10	5
12	4
14/16	4
18/20	3
22/24	3
26/28	2
30/32	2
36	1
42/48	.5

Quick and Easy Component Assembly

For all Selkirk pipe and fittings, the flange-to-flange inner pipe joints are identical for each pipe inside diameter.

Quick and easy component assembly using only standard tools.



*Illustrations shown are for reference only.

(Refer to Installation Instructions for detailed sealant application and use.)



Straight Length Component

Used horizontally and vertically – array of components available, designed to make a complete installation simple and quick.



Channel Band Assembly

Used to enclose the inner-wall conduit and component locking system, providing a clean finished appearance for the overall installation; factory-assembled components with a one-piece assembly facilitates field installation.



V-Band Component Locking Assembly

Used to secure adjacent components for a strong secure joint; factory-assembled components with a one-piece assembly facilitates field installation.



Alignment Sleeve

Used to provide easier and quicker component assembly in centering adjacent components in the horizontal and vertical orientations and provides a backing for sealant applied to the flange keeping it in the intended location, along with adding strength to the overall joint connection.



Straight Length Component

Used horizontally and vertically – array of components available, designed to make a complete installation simple and quick.

Finished Assembly

Completed installation provides a strong, uniformly aligned pressure stack.



Straight Pipe Lengths

Codes:
59, 42, 30, 18

Standard pipe lengths for all Selkirk exhaust systems.



Materials Available:

316/Alum	316/304	316/316
----------	---------	---------

- 59.13" lengths available in
 - 6" dia. through 24" dia., PS and IPSC1
 - 6" dia. through 22" dia., IPSC2
 - 6" dia. through 20" dia., IPS-Z3
 - 6" dia. through 18" dia., IPSC4
- 42" lengths available in:
 - 5" dia. through 42" dia., PS/IPSC1
 - 5" dia. through 40" dia., IPSC2
 - 5" dia. through 36" dia., IPS-Z3/IPSC4
- 18" & 30" lengths available in all diameters (5"-48") of all products (PS, IPSC1, IPSC2, IPS-Z3, IPSC4).

Ordered Part Includes:

Straight Pipe Length, plus one VB, one AS, and one CB.

Notes:

1. Special pipe lengths from 6" to 59.13" available upon special request.

(i.e. 25.5" length)

2. K Factors

(Where L = pipe length in feet and D = pipe diameter in inches)

- a. For Boiler Stacks and Chimneys:

$$K = 0.30 \frac{L}{D}$$

- b. For Diesel and Turbine Exhausts and Grease Ducts:

$$K = 0.25 \frac{L}{D}$$

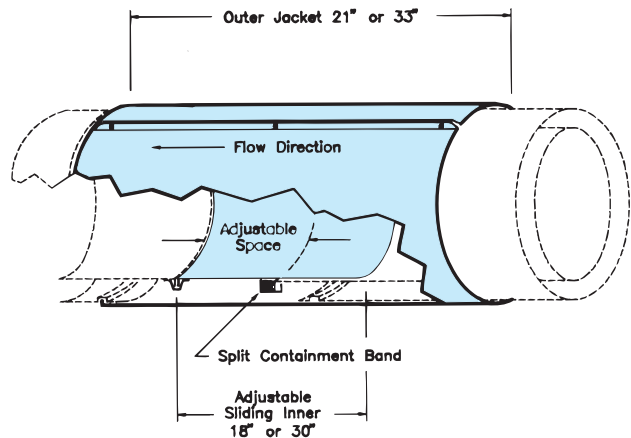
e.g. for 50 feet of 10 inch diameter pipe

$$K = 0.25 \frac{50}{10} = 1.25$$

Adjustable Pipe Lengths

Codes:
AG30, AG18

Fills odd dimensions and compensates for expansion between two fixed points on low pressure applications.



Materials Available:

316/Alum	316/304	316/316
----------	---------	---------

Ordered Part Includes:

Pipe, plus one 30" or 18" inner Slip Section, one TSU, one Packing Seal, one two-piece Compression Band, one two-piece Containment Ring, one two-piece Outer Jacket, and one VB. Ceramic fiber insulation provided for IPS models.

Notes:

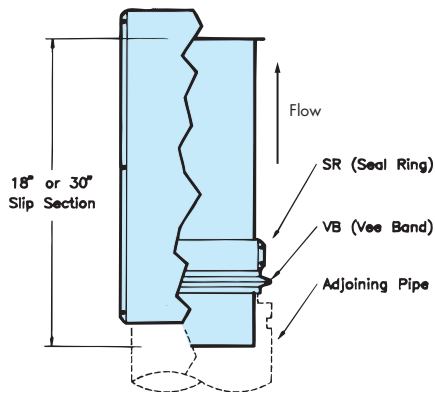
1. Minimum installed length is 4".
2. AG18 not available for 28" diameter and above.
3. Maximum installed space is when the inner slip section protrudes at least 1/2 pipe diameter into the adjacent pipe.
4. Flow Resistance Factor (K) is the same as insulated pipe lengths.

Variable Pipe Lengths

Codes:
VL30, VL18

Fills odd dimensions between standard lengths. (Not used to compensate for thermal expansion.)

- VL30 fills 4"- 26" space.
- VL18 fills 4"-14" space.



Materials Available:

- 316/Alum
- 316/304
- 316/316

Ordered Part Includes:
VL30 or VL18, plus one 30" or 18" Inner Slip Section, one two-piece Outer Jacket, one Custom SR, and one VB.
Ceramic fiber insulation provided for IPS models.

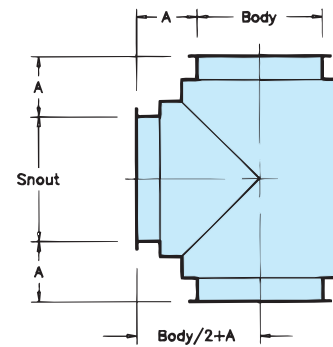
Notes:

1. The Custom SR is sealed with supplied sealant, not allowing the VL to compensate for expansion.
2. Flow Resistance Factor (K) is the same as insulated pipe.

90° Manifold Tee

Code:
MT

Joins vertical and horizontal sections to affect a change of direction. Also provides for connection of drain or inspection fittings.



Dimension A			
PS/IPS-C1	IPS-C2	IPS-Z3	IPS-C4
4"	5"	6"	7"

Materials Available:

- 316/Alum
- 316/304
- 316/316

Ordered Part Includes:
MT, plus one VB for the body diameter, one VB for the snout diameter, one AS for the body diameter, and one CB for the body diameter.

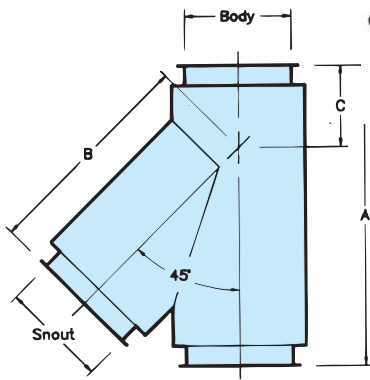
Notes:

1. Use TCN/NTAC for clean out or inspection, or TC for drain at base of vertical stack.
2. Snout available in any standard diameter equal to or smaller than the body diameter.
3. K = 1.25 Flow Resistance Factor

45° Lateral Tee

Code:
JL

Provides a low resistance entry into manifolds. Combine with EL45 for low resistance 90° direction change.



Materials Available:

316/Alum	316/304	316/316
----------	---------	---------

Ordered Part

Includes:
JL, plus one VB for the body diameter, one VB for the snout diameter, one AS for the body diameter, and one CB for the body diameter.

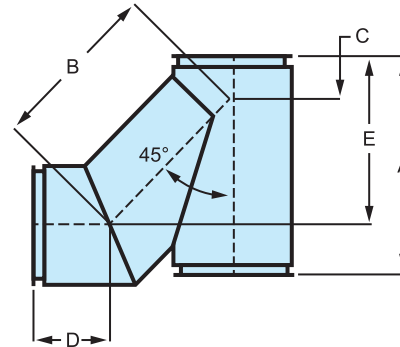
Notes:

- Snout available in any standard diameter equal to or smaller than the body diameter.
- K = 0.4 Flow Resistance Factor

Product				Dimensions			
(Pipe I.D.)				(Inches)			
PS/IPS-C1	IPS-C2	IPS-Z3	IPS-C4/IPS-Z4	A	B	C	(O.D.)
5	-	-	-	19 1/2	13 3/4	5 3/4	7
6	5	-	-	19 1/2	13 3/4	5 3/4	8/9
8	6	-	-	22 7/8	16 5/8	6 1/4	10
-	-	5	-	23 1/2	17 3/4	5 3/4	11
10	8	6	-	24 1/16	19	5 1/16	12
-	-	-	5	26 15/16	21 7/16	5 1/2	13
12	10	8	6	26 15/16	21 7/16	5 1/2	14
14	12	10	8	29 3/4	23 7/8	5 7/8	16
16	14	12	10	32 9/16	26 1/4	6 5/16	18
18	16	14	12	35 3/8	28 3/4	6 3/4	20
20	18	16	14	38 3/16	31 1/16	7 1/8	22
22	20	18	16	43 7/8	35 7/8	8	24
24	22	20	18	43 7/8	35 7/8	8	26
26	24	22	20	49 9/16	40 3/4	8 13/16	28
28	26	24	22	49 9/16	40 3/4	8 13/16	30
30	28	26	24	55 3/16	45 9/16	9 5/8	32
32	30	28	26	55 3/16	45 9/16	9 5/8	34
-	32	30	28	60 13/16	50 3/8	10 7/16	36
-	32	30	28	60 13/16	50 3/8	10 7/16	38
-	36	-	32	69 15/16	58 1/4	11 3/4	40
-	-	36	-	69 15/16	58 1/4	11 3/4	42
-	36	-	32	69 15/16	58 1/4	11 3/4	44
-	-	36	-	69 15/16	58 1/4	11 3/4	46
42	-	-	36	69 15/16	58 1/4	11 3/4	48
-	42	-	-	79 3/16	66 1/8	13	50
48	-	-	42	79 3/16	66 1/8	13	52
-	48	-	-	88 5/8	74 1/4	14 7/16	54
-	-	-	48	88 5/8	74 1/4	14 7/16	56

Combination Lateral Tee

Code:
CL



Materials Available:

304/Alum	316/Alum	304/304	316/316
----------	----------	---------	---------

Note: Alum is aluminized steel

Ordered Part Includes:

CL, plus one VB for the body diameter, one VB for the snout diameter, one AS for the body diameter, and one CB for the body diameter.

Notes:

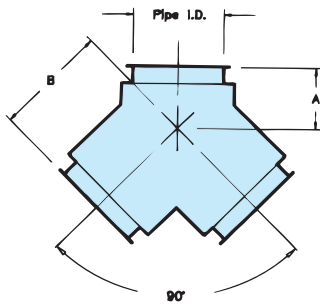
- K = 0.55 Flow Resistance Factor

Product				Dimensions					
(Pipe I. D.)				(Inches)					
PS/IPS C1	IPS C2	IPS Z3	IPS C4/Z4	A	B	C	D	E	(O. D.)
5	-	-	-	19-1/2	13-3/4	5-3/4	8-1/2	15-3/8	7
6	5	-	-	19-1/2	13-3/4	5-3/4	8-1/2	15-3/8	8/9
8	6	-	-	22-7/8	16-5/8	6-1/4	8-15/16	18	10
-	-	5	-	23-1/2	17-3/4	5-3/4	9-1/8	18-5/16	11
10	8	6	-	24-1/16	19	5-1/16	9-5/16	18-1/2	12
-	-	-	5	26-15/16	21-7/16	5-1/2	10-1/4	20-9/16	13
12	10	8	6	26-15/16	21-7/16	5-1/2	10-1/4	20-9/16	14
14	12	10	8	29-3/4	23-7/8	5-7/8	10-11/16	22-3/4	16
16	14	12	10	32-9/16	26-1/4	6-5/16	11-5/8	24-7/8	18
18	16	14	12	35-3/8	28-3/4	6-3/4	12-1/16	27	20
20	18	16	14	38-3/16	31-1/16	7-1/8	13	29-1/16	22
22	20	18	16	43-7/8	35-7/8	8	13-5/16	33-3/8	24
24	22	20	18	43-7/8	35-7/8	8	14-5/16	33-3/8	26
26	24	22	20	49-9/16	40-3/4	8-13/16	14-7/8	37-5/8	28
28	26	24	22	49-9/16	40-3/4	8-13/16	15-11/16	37-5/8	30
30	28	26	24	55-3/16	45-9/16	9-5/8	16-1/4	41-13/16	32
32	30	28	26	55-3/16	45-9/16	9-5/8	17	41-13/16	34
-	32	30	28	60-13/16	50-3/8	10-7/16	17-9/16	46-1/16	36
36	-	32	30	60-13/16	50-3/8	10-7/16	18-3/8	46-1/16	38
-	36	-	32	69-15/16	58-1/4	11-3/4	18-7/8	52-15/16	40
-	-	36	-	69-15/16	58-1/4	11-3/4	19-5/16	52-15/16	42
42	-	-	36	69-15/16	58-1/4	11-3/4	19-11/16	52-9/16	44
-	42	-	-	79-3/16	66-1/8	13	20-1/8	59-11/16	46
48	-	-	42	79-3/16	66-1/8	13	21-7/16	59-11/16	50
-	48	-	-	88-5/8	74-1/4	14-7/16	21-7/16	64-1/2	52
-	-	-	48	88-5/8	74-1/4	14-7/16	21-7/16	66-15/16	56

90° WYE

Code:
JY

Provides low pressure drop for joining appliances in the horizontal and vertical position.



Materials Available:

316/Alum

316/304

316/316

Ordered Part

Includes:

JY, plus two VB's, one AS, and one CB.

Notes:

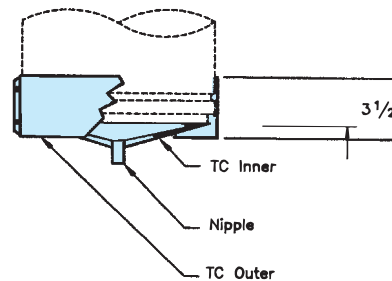
1. All openings are the same diameter.
2. Can be used with TCN/NTAC to provide a single clean out toward each 90° direction change.
3. Use OT or OS as needed for smaller branch connections.
4. K = 0.6 Flow Resistance Factor

Product				Dimensions		
(Pipe I.D.)				(Inches)		
PS/ IPS-C1	IPS-C2	IPS-Z3	IPS-C4/ IPS-Z4	A	B	(O.D.)
5	-	-	-	4 5/8	9	7
6	5	-	-	4 5/8	9	8/9
8	6	-	-	5 1/16	10	10
-	-	5	-	5	11	11
10	8	6	-	5	11	12
-	-	-	5	5 1/2	12	13
12	10	8	6	5 1/2	12	14
14	12	10	8	5 7/8	13	16
16	14	12	10	6 3/8	14	18
18	16	14	12	6 5/8	15	20
20	18	16	14	7 1/8	17	22
22	20	18	16	8	19	24
24	22	20	18	8	19	26
26	24	22	20	8 3/4	22	28
28	26	24	22	8 3/4	22	30
30	28	26	24	9 5/8	24	32
32	30	28	26	9 5/8	24	34
-	32	30	28	10 1/2	27	36
36	-	32	30	10 1/2	27	38
-	36	-	32	11 3/4	31	40
-	-	36	-	11 3/4	31	42
42	-	-	36	11 3/4	31	44
-	42	-	-	13	34	46
48	-	-	42	13	34	50
-	48	-	-	14 1/4	38	52
-	-	-	48	14 1/4	38	56

Drain Tee Cap

Code:
TC

Provides a drain at the base of a vertical chimney when connected to the MT or JL.



Materials Available:

316/Alum

316/304

316/316

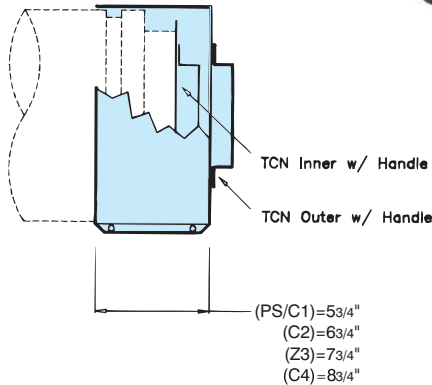
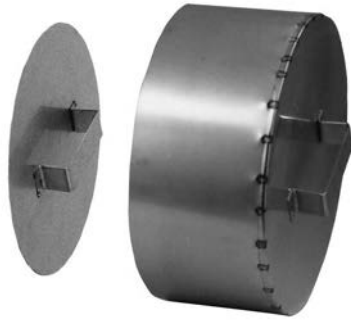
Ordered Part Includes:

TC, plus one 1" N.P.T. Nipple (5"-20" sizes), or 2" N.P.T. Nipple (22"-48" sizes), one Inner Section, one Outer Jacket, and one VB. Ceramic fiber insulation provided for IPS models.

Cleanout Tee Cap

Code:
TCN

Provides for cleanout at end of manifold when connected to MT or JL.



Materials Available:



Ordered Part Includes:

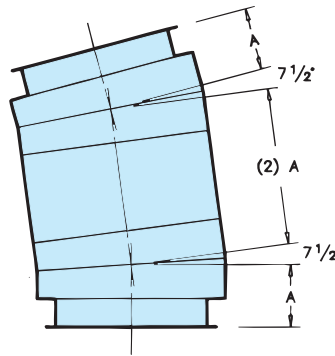
TCN, plus one Inner Section (with handle), one Outer Jacket (with handle), and one VB.

Ceramic fiber insulation provided for IPS models

15° Elbow

Code:
EL15

This two-piece Elbow can establish many different degrees when combined with other standard Elbows.



Materials Available:



Ordered Part Includes:

Two 7 1/2 Deg. Elbows, plus two VB's, two AS's, and two CB's.

Notes:

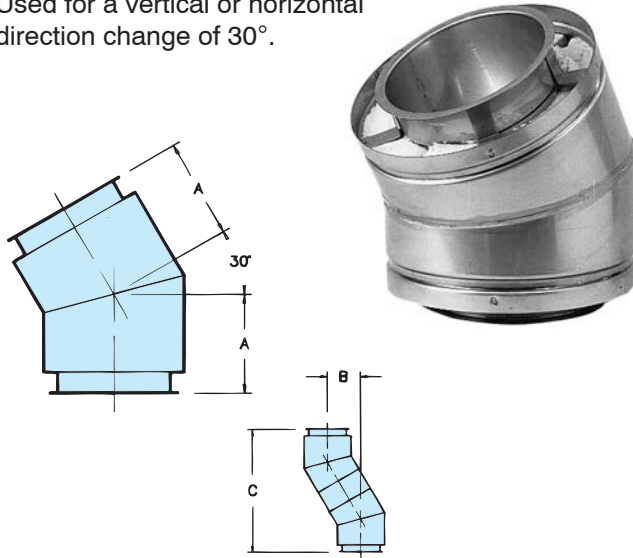
1. K = 0.06 Flow Resistance Factor

PS/ IPS-C1	Product (Pipe I.D.)			Dimensions (Inches)	
	IPS-C2	IPS-Z3	IPS-C4	A	(O.D.)
5	-	-	-	4 3/16	7
6	5	-	-	4 3/16	8/9
8	6	-	-	4 1/4	10
-	-	5	-	4 5/16	11
10	8	6	-	4 5/16	12
-	-	-	5	4 7/16	13
12	10	8	6	4 7/16	14
14	12	10	8	4 1/2	16
16	14	12	10	4 9/16	18
18	16	14	12	4 5/8	20
20	18	16	14	4 11/16	22
22	20	18	16	4 3/4	24
24	22	20	18	4 13/16	26
26	24	22	20	4 7/8	28
28	26	24	22	4 15/16	30
30	28	26	24	5	32
32	30	28	26	5 1/16	34
-	32	30	28	5 1/8	36
36	-	32	30	5 3/16	38
-	36	-	32	5 5/16	40
-	-	36	-	5 3/8	42
42	-	-	36	5 3/8	44
-	42	-	-	5 1/24	46
48	-	-	42	5 9/16	50
-	48	-	-	5 9/16	52
-	-	-	48	5 9/16	56

30° Elbow

Code:
EL30

Used for a vertical or horizontal direction change of 30°.



Materials Available:

316/Alum

316/304

316/316

Ordered Part Includes:
EL30, plus one VB, one AS,
and one CB.

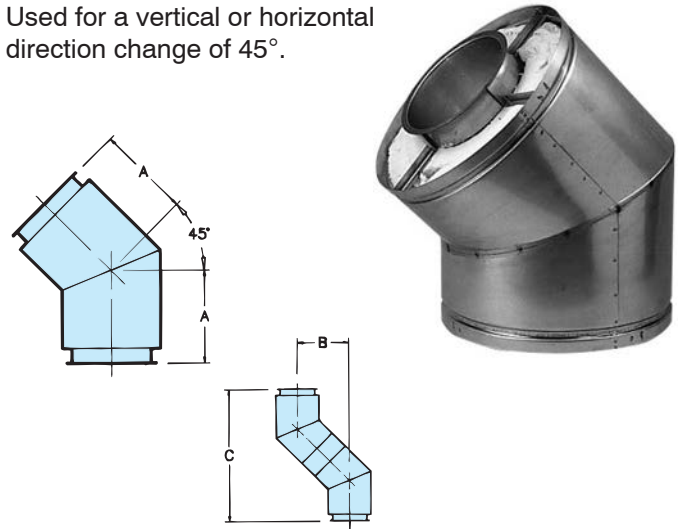
Notes:
1. K = 0.12 Flow
Resistance Factor

Product				Dimensions			
(Pipe I.D.)				(Inches)			
PS/ IPS-C1	IPS-C2	IPS-Z3	IPS-C4	A	B	C	(O.D.)
5	-	-	-	6 1/8	6 1/8	22 3/8	7
6	5	-	-	6 1/8	6 1/8	22 7/8	8/9
8	6	-	-	6 3/8	6 3/8	23 7/8	10
-	-	5	-	6 9/16	6 9/16	24 3/8	11
10	8	6	-	6 11/16	6 11/16	24 7/8	12
-	-	-	5	7 5/16	7 5/16	27 1/4	13
12	10	8	6	7 5/16	7 5/16	27 1/4	14
14	12	10	8	7 7/8	7 7/8	29 5/8	16
16	14	12	10	8 1/4	8 1/4	30 5/8	18
18	16	14	12	8 5/8	8 5/8	31 5/8	20
20	18	16	14	9 1/8	9 1/8	34 1/8	22
22	20	18	16	9 3/8	9 3/8	35	24
24	22	20	18	10 1/16	10 1/16	37 1/2	26
26	24	22	20	10 5/16	10 5/16	38 1/2	28
28	26	24	22	11	11	40 7/8	30
30	28	26	24	11 1/4	11 1/4	41 7/8	32
32	30	28	26	11 7/8	11 7/8	44 3/8	34
-	32	30	28	12 3/16	12 3/16	45 3/8	36
36	-	32	30	12 7/8	12 7/8	47 3/4	38
-	36	-	32	13 1/8	13 1/8	48 7/8	40
-	-	36	-	13 9/16	13 9/16	50 5/8	42
42	-	-	36	14	14	52 1/2	44
-	42	-	-	14 1/4	14 1/4	53 1/8	46
48	-	-	42	14 3/16	14 3/16	56 7/16	50
-	48	-	-	15 5/16	15 5/16	57 1/8	52
-	-	-	48	15 5/16	15 5/16	57 1/8	56

45° Elbow

Code:
EL45

Used for a vertical or horizontal direction change of 45°.



Materials Available:

316/Alum

316/304

316/316

Ordered Part Includes:
EL45, plus one VB, one AS,
and one CB.

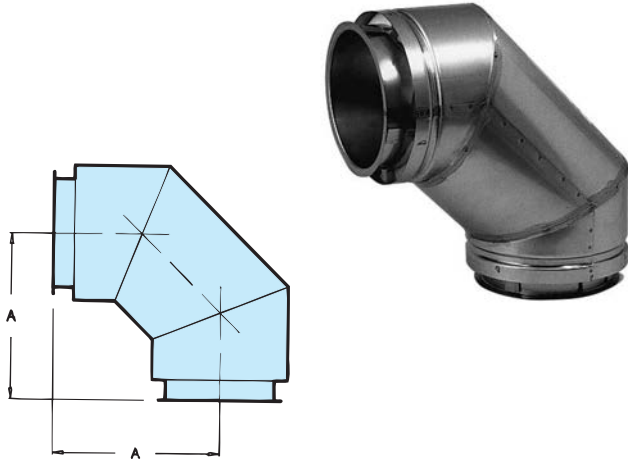
Notes:
1. K = 0.15 Flow
Resistance Factor

Product				Dimensions			
(Pipe I.D.)				(Inches)			
PS/ IPS-C1	IPS-C2	IPS-Z3	IPS-C4	A	B	C	(O.D.)
5	-	-	-	8 1/2	12	29	7
6	5	-	-	8 1/2	12	29	8/9
8	6	-	-	8 15/16	12 5/8	30 7/16	10
-	-	5	-	9 1/8	12 7/8	31 1/8	11
10	8	6	-	9 5/16	13 3/16	31 7/8	12
-	-	-	5	10 1/4	14 1/2	35	13
12	10	8	6	10 1/4	14 1/2	35	14
14	12	10	8	10 11/16	15 1/8	36 1/2	16
16	14	12	10	11 5/8	16 7/16	39 5/8	18
18	16	14	12	12 1/16	17 1/16	41 1/8	20
20	18	16	14	13	18 3/8	44 1/4	22
22	20	18	16	13 5/16	18 13/16	45 1/2	24
24	22	20	18	14 5/16	20 1/4	48 1/8	26
26	24	22	20	14 7/8	21 1/16	50 7/8	28
28	26	24	22	15 11/16	22 3/16	53 1/2	30
30	28	26	24	16 1/4	22 15/16	53 3/8	32
32	30	28	26	17	24	58	34
-	32	30	28	17 9/16	24 3/4	59 7/8	36
36	-	32	30	18 3/8	25 15/16	62 5/8	38
-	36	-	32	18 7/8	26 11/16	64 1/2	40
-	-	36	-	19 5/16	27 5/16	65 15/16	42
42	-	-	36	19 11/16	27 7/8	67	44
-	42	-	-	20 1/8	28 7/16	68 5/8	46
48	-	-	42	21 7/16	30 5/16	74 7/8	50
-	48	-	-	21 7/16	30 5/16	74 7/8	52
-	-	-	48	21 7/16	30 5/16	74 7/8	56

90° Elbow

Code:
EL90

Used for a vertical or horizontal direction change of 90°.



Materials Available:

316/Alum

316/304

316/316

Ordered Part Includes:
EL90, plus one VB, one AS, and one CB.

Notes:

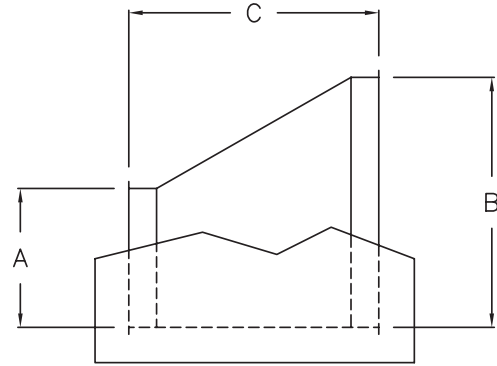
1. $K = 0.30$ Flow Resistance Factor

Product				Dim.	
(Pipe I.D.)				(Inches)	
PS/ IPS-C1	IPS-C2	IPS-Z3	IPS-C4	A	(O.D.)
5	-	-	-	11 1/2	7
6	5	-	-	11 1/2	8/9
8	6	-	-	12 1/2	10
-	-	5	-	13 1/2	11
10	8	6	-	13 1/2	12
-	-	-	5	14 1/2	13
12	10	8	6	14 1/2	14
14	12	10	8	15 1/2	16
16	14	12	10	16 1/2	18
18	16	14	12	17 1/2	20
20	18	16	14	18 1/2	22
22	20	18	16	19 1/2	24
24	22	20	18	20 1/2	26
26	24	22	20	21 1/2	28
28	26	24	22	22 1/2	30
30	28	26	24	23 1/2	32
32	30	28	26	24 1/2	34
-	32	30	28	25 1/2	36
36	-	32	30	26 1/2	38
-	36	-	32	27 1/2	40
-	-	36	-	28 1/2	42
42	-	-	36	29 1/2	44
-	42	-	-	30 1/2	46
48	-	-	42	32 1/2	50
-	48	-	-	33 1/2	52
-	-	-	48	35 1/2	56

Eccentric Increaser

Code:
EOT

The primary increaser used for changing diameters, due to flat bottom for effective condensate flow back to drain.



Materials Available:

316/Alum

316/304

316/316

Dimensions:

A = Smaller Diameter

B = Larger Diameter

C = Installed Length = $[(B-A) 2] + 2$ (see Note 1 below)

Example:

Installed Length for 12P304-18EOT equals $[(18-12)2] + 2 = 14$ inches.

Ordered Part Includes:

EOT, plus one two-piece Outer Jacket, and one VB for smaller diameter.

Ceramic fiber insulation provided for IPS models.

Notes:

1. Installed length shall not be greater than longest available straight pipe length (see page 10) for each diameter.

2. $K = N [1-(A/B)2]2$

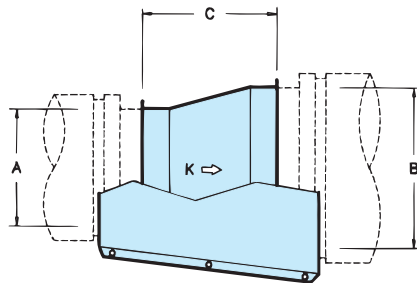
where $N = 0.47$ for one step EOT

$N = 0.53$ for two step EOT

Tapered Increaser/Reducer

Code:
OT

Used when a pipe diameter change is required. Make sure condensate build-up in larger diameter is drained away downstream of increaser.



Materials Available:



Dimensions:

A = Smaller Diameter

B = Larger Diameter

C = Installed Length = $[(B-A) 2] + 2$ (see Note 1 below)

Example:

Installed Length for 12P316-180T equals $[(18-12)2] + 2 = 14$ inches.

Ordered Part Includes:

OT, plus one two-piece Outer Jacket, and one VB for smaller diameter.

Ceramic fiber insulation provided for IPS models.

Notes:

1. Installed length shall not be greater than longest available straight pipe length (see page 10) for each diameter.

2. $K = N [1 - (A/B)^2]^2$

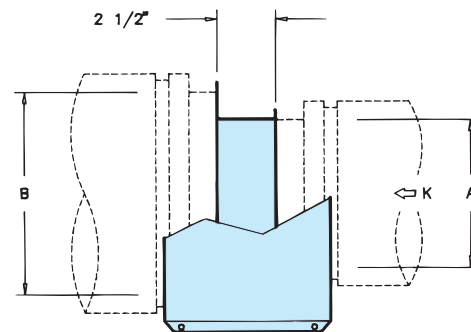
where N = 0.47 for one step OT

N = 0.53 for two step OT

Step Increaser/Reducer

Code:
OS

Used when pipe diameter change is required in a small space. Make sure condensate build-up in large diameter is drained away downstream of increaser.



Materials Available:



Ordered Part Includes:

OS (Inner Stepped Pipe), plus one two-piece Outer Jacket, and one VB for the smaller diameter.

Ceramic fiber insulation provided for IPS models.

Notes:

1. This is a non-structural part; use only if OT will not fit within the allowable space.

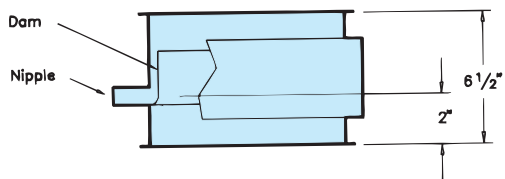
2. $K = N [1 - (A/B)^2]^2$

Drain Section

Code:

DS

Used with open stack terminations for draining off rain water from inside vertical or horizontal flue.



Materials Available:

316/Alum

316/304

316/316

Ordered Part Includes:

DS, plus one Drain Dam within the pipe length, one 1" Nipple, one CB, and one VB.

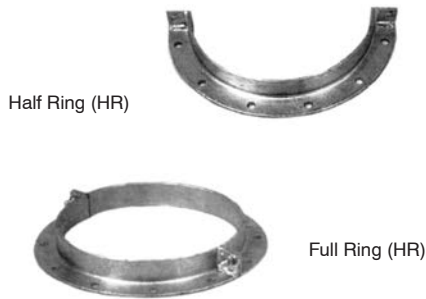
Notes:

1. $K = 0.25$ Flow Resistance Factor

Angle Rings

Codes:
HR & FR

Used for guiding and/or supporting horizontal installations.



Materials Available:

Painted Steel

Notes:

1. Model PS part used for IPSC1 applications.

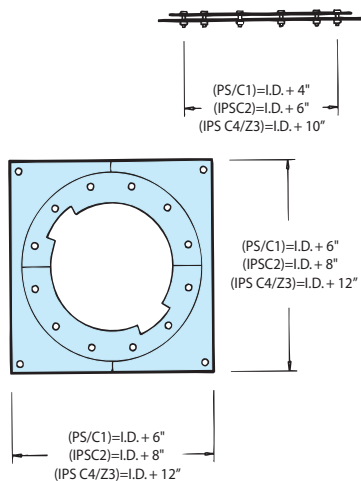
Product				Dimensions (Inches)				HR
(Pipe I.D.)				Bolt Hole Circle	I.D. of Ring	No. of Holes (HR)	Size of Angles	Angle of Holes
PS / IPS-C1	IPS-C2	IPS-Z3	IPS-C4/ IPS-Z4					
5	-	-	-	9	7 1/8	6	(1)	45
6	5	-	-	10	8 1/8	6	(1)	45
8	6	-	-	12	10 1/8	6	(1)	45
-	-	5	-	13	11 1/8	6	(1)	45
10	8	6	-	14	12 1/8	6	(1)	45
-	-	-	5	15	13 1/8	6	(1)	45
12	10	8	6	16	14 1/8	6	(1)	45
14	12	10	8	18	16 1/8	6	(1)	45
16	14	12	10	20	18 1/8	6	(1)	45
18	16	14	12	22	20 1/8	6	(1)	45
20	18	16	14	24	22 1/8	6	(1)	45
22	20	18	16	26	24 1/8	10	(2)	22.5
24	22	20	18	28	26 1/8	10	(2)	22.5
26	24	22	20	30	28 1/8	10	(2)	22.5
28	26	24	22	32	30 1/8	10	(2)	22.5
30	28	26	24	34	32 1/8	10	(2)	22.5
32	30	28	26	36	34 1/8	10	(2)	22.5
-	32	30	28	38	36 1/8	10	(2)	22.5
36	-	32	30	40	38 1/8	10	(2)	22.5
-	36	-	32	42	40 1/8	10	(2)	22.5
-	-	36	-	44	42 1/8	10	(2)	22.5
42	-	-	36	46	44 1/8	10	(2)	22.5
-	42	-	-	48	48 1/8	10	(2)	22.5
48	-	-	42	52	50 1/8	10	(2)	22.5
-	48	-	-	54	62 1/8	10	(2)	22.5
-	-	-	48	58	66 1/8	10	(2)	22.5

(1) Size of Angles = 1 1/2 x 1 1/2 x 3/16
(2) Size of Angles = 2 x 2 x 3/16

Plate Support Assembly

Code:
PA

Used for supporting the load of the stack, and as a fixed point anchor near fittings.



Materials Available:

Painted Steel

Ordered Part Includes:

Split (square) plate, one CF, two HCB's and hardware.

Plate Thickness:

0.188" for sizes 6" through 20" diameters
0.250" for sizes 22" through 36" diameters
0.375" for sizes 42" through 48" diameters

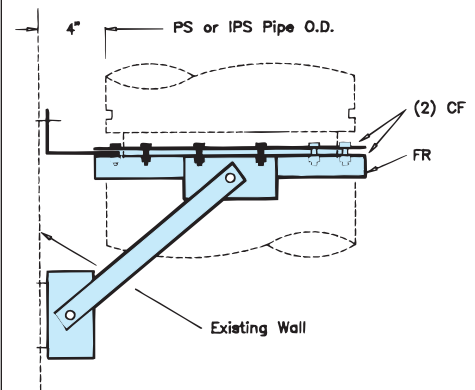
Notes:

- Two 316 Stainless Steel HCB's are provided for stainless steel outer projects.
- PA fabricated from 304 Stainless Steel is available upon request and is non-returnable. Allow extra manufacturing time.

Wall Support Assembly

Code:
WA

"Limited" support assembly with factory supplied bracing.



Materials Available:

Painted Steel

Ordered Part Includes:

One FR, two CF's, two HCB's, five brackets, two struts, and all hardware except connection at wall.

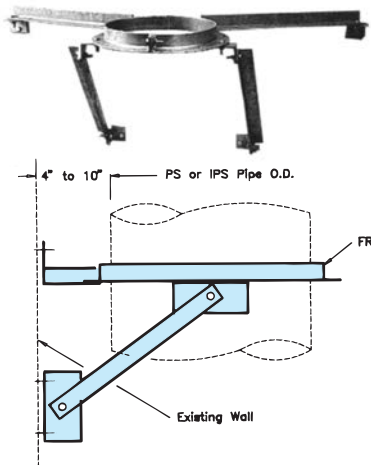
Notes:

- Assembly will maintain a 4" clearance between pipe O.D. and supporting structure.

Wall Guide Assembly

Code:
WG

Same use as FR, but with factory-supplied bracing.



Materials Available:

Painted Steel

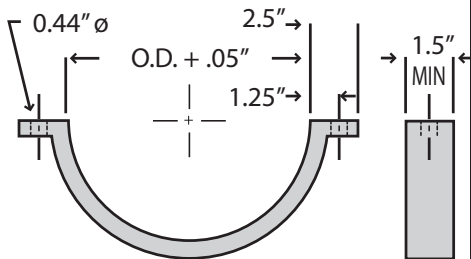
Ordered Part Includes:
One FR, four struts, and six brackets.

Notes:

1. Assembly will maintain a 4" to 10" clearance between pipe O.D. and supporting structure.
2. Model PS part used for IPSC1 applications.

Support Strap

Code:
SS



Materials Available:

Painted Steel

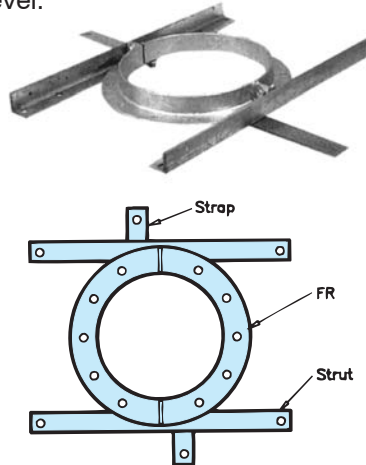
Notes:

Available in 5 through 26" PS only.
0.188" Thick Hot Rolled Steel

Floor Guide Assembly

Code:
FG

Same use as FR, but with factory-supplied bracing for use at floor level.



Materials Available:

Painted Steel

Ordered Part Includes:
One FR, two struts, and two straps.

Notes:

1. Maximum hole through floor should not exceed the pipe O.D. plus 8".
2. Model PS part used for IPSC1 applications.

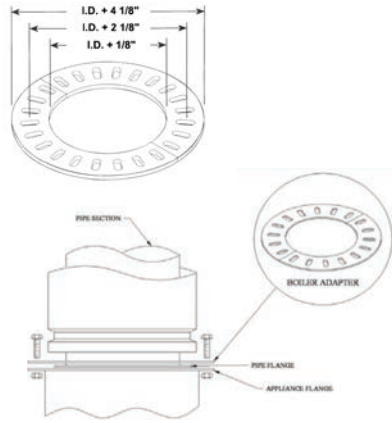
Pipe I.D. (Inches)				Dimensions	
IPS / IPS-C1	IPS-C2	IPS-Z3	IPS-C4	Strut Length	Strut Size
5	-	-	-	17 1/2	(1)
6	-	-	-	18	(1)
-	5	-	-	19 1/2	(1)
8	6	-	-	21	(1)
-	-	5	-	21 1/2	(1)
-	-	-	5	22 1/2	(1)
10	8	6	-	24	(1)
12	10	8	6	27	(1)
14	12	10	8	29	(2)
16	14	12	10	30	(2)
18	16	14	12	32	(2)
20	18	16	14	33	(2)
22	20	18	16	34 1/2	(3)
24	22	20	18	36	(3)
26	24	22	20	37	(3)
28	26	24	22	38	(3)
30	28	26	24	39 1/2	(3)
32	30	28	26	41	(3)
-	32	30	28	42 1/2	(3)
36	-	32	30	44	(3)
-	36	-	32	46	(3)
-	-	36	-	47	(3)
42	-	-	-	48	(3)
-	42	-	36	50	(3)
-	-	-	42	52	(3)
48	-	-	-	53	(3)
-	48	-	-	54	(3)
-	-	-	48	58	(3)

- (1) Steel Angle = 1-1/2 x 1-1/2 x 3/16
- (2) Steel Angle = 1-3/4 x 1-3/4 x 3/16
- (3) Steel Angle = 2 x 2 x 3/16

Flanged Boiler Kit

Code:
BK

Used to transition to a flanged appliance. Features 24 connection slots to mate 4, 6, 8 or 12 bolt hole patterns.



24 Holes .375 x 1.0 at 15 degrees.
Constructed of 1/4" hot-rolled steel.

Ordered Part Includes:
Two Half Boiler Adapter Flange Plates.
Order HCB's separately if needed.

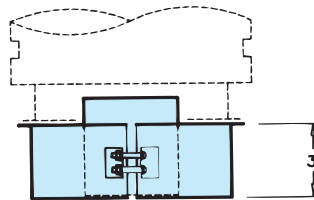
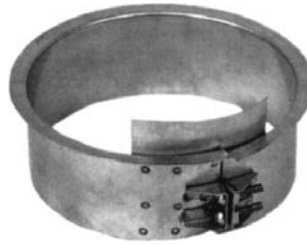
Notes:

1. Model PS part used for all IPS applications.

Seal Ring

Code:
SR

Used for non-welded attachment to appliances having an unflanged or collar outlet.



Materials Available:

316/Alum **316/304** **316/316**

Ordered Part Includes:
SR, one CB, and one VB & hardware

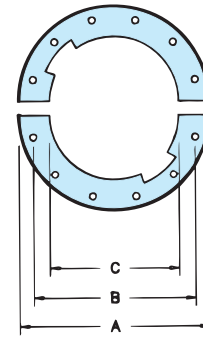
Notes:

1. Ceramic fiber insulation provided for IPS models.

Clamp Flange

Code:
CF

Can be used as an attachment to flanged equipment (also part of PA and WA).



A = Flange O.D.
PS/IPSC1 = I.D. + 5"
C2 = I.D. + 7"
Z3/C4 = I.D. + 11"

B = Bolt Hole Circle
PS/IPSC1 = I.D. + 4"
C2 = I.D. + 6"
Z3/C4 = I.D. + 10"

C = Flange I.D.
PS/IPSC1 = I.D. + 1/2"
C2, C4
Z3

Materials Available:

Painted Steel

Ordered Part Includes:
Two half clamp flange plates.

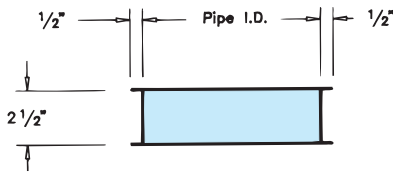
Notes:

1. 0.139" minimum thickness for sizes 5" to 8" diameters.
2. 0.188" minimum thickness for sizes 10" through 36" diameters.
3. 0.375" minimum thickness for sizes 42" and 48" diameters.
4. Model PS part used for IPSC1 applications.
5. Order HCB's separately if needed.

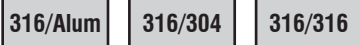
Flanged Transition

Code:
TS

Flanged at both ends.



Materials Available:



Ordered Part Includes:
TS, plus one CB and one VB.
Ceramic fiber insulation provided with IPS models.

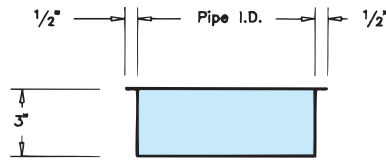
Notes:

1. Can be used for welding to equipment or transitions fabricated in the field.

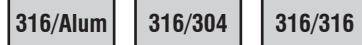
Unflanged Transition

Code:
TSU

Flanged at one end.



Materials Available:



Ordered Part Includes:
TSU, plus one CB and one VB.
Ceramic fiber insulation provided with IPS models.

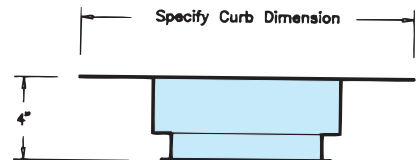
Notes:

1. Can be used for welding to equipment or transitions fabricated in the field.

Fan Adapter

Code:
FA

Used for connection to an “up-blast” kitchen exhaust fan.



Materials Available:



Ordered Part Includes:
FA, plus one VB and one CB.

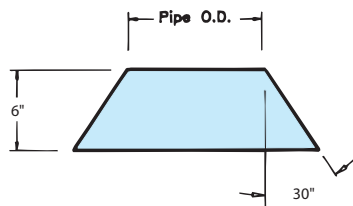
Notes:

1. Dimension of square plate (which is sandwiched between curb and fan housing) must be specified when ordering.

Storm Collar

Code:
SC

Used above the TF and PTF for complete weatherization above the roof.



Materials Available:

Aluminized or Galvanized Steel		304	316
--------------------------------	--	-----	-----

Ordered Part Includes:
SC, plus hardware.

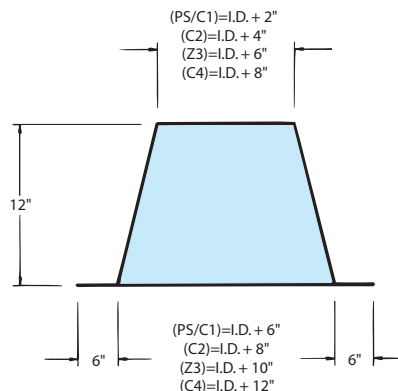
Notes:

1. Requires P600 sealant when installing.
2. Model PS part used for IPSC1 applications.

Tall Flashing

Code:
TF

Used in conjunction with SC for weatherization at the roof.



Materials Available:

Aluminized or Galvanized Steel		304	316
--------------------------------	--	-----	-----

Ordered Part Includes:
TF only.

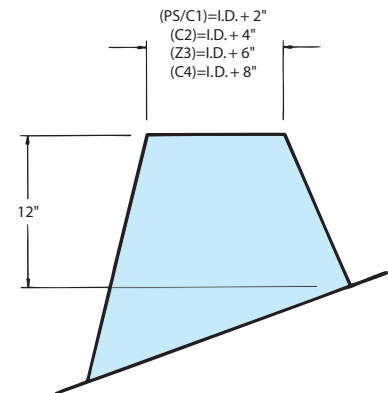
Notes:

1. Use limited to installations where complete roof penetration is non-combustible.
2. Model PS part used for IPSC1 applications

Pitched Tall Flashing

Code:
PTF

Same function as TF, except for use on a pitched roof.



Materials Available:

Aluminized or Galvanized Steel		304	316
--------------------------------	--	-----	-----

Ordered Part Includes:
PTF only (specify pitch when ordering).

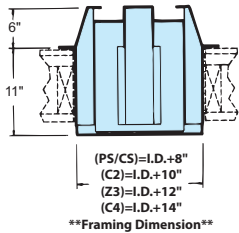
Notes:

1. Part is non-returnable and may require extra manufacturing time.
2. Use limited to installations where complete roof penetration is non-combustible.
3. Model PS part used for IPSC1 applications.

Ventilated Thimble

Code: THB

Body part of MVT, MRS, and PVT. Also can be used by itself for a wall penetration (see installation instructions).



Materials Available:

Galvanized Steel

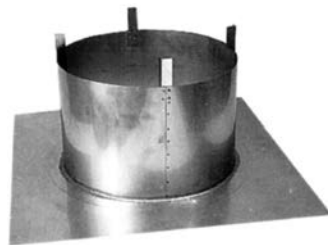
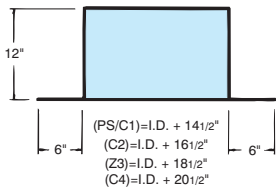
Notes:

1. Model PS part used for IPSC1 applications.

Ventilated Tall Flashing

Code: VTF

Encloses the THB, offers protection from weather and moisture penetration



Materials Available:

Aluminized or Galvanized Steel	304	316
--------------------------------	-----	-----

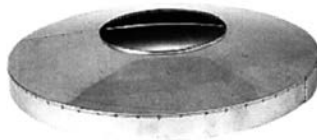
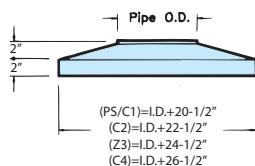
Notes:

1. Model PS part used for IPSC1 applications.

Ventilated Storm Collar

Code: VSC

Protects the VTF from weather and moisture penetration. Also used with THB for wall penetration (see installation instructions).



Materials Available:

Aluminized or Galvanized Steel	304	316
--------------------------------	-----	-----

Notes:

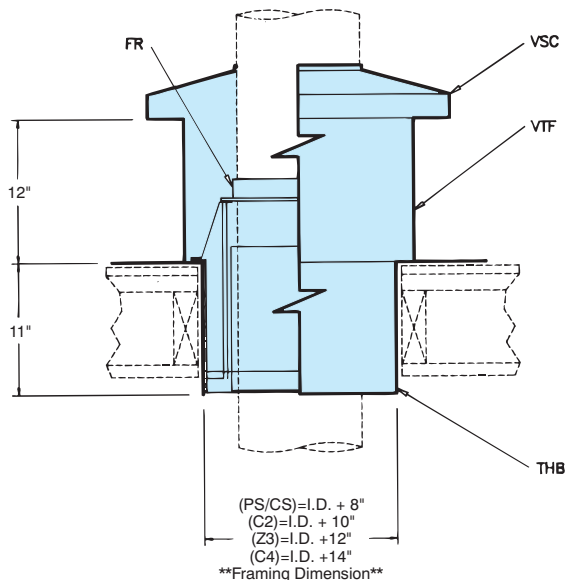
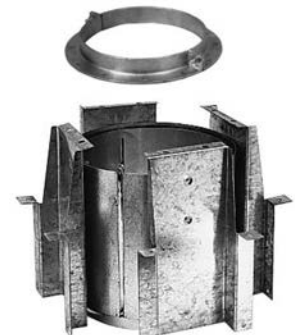
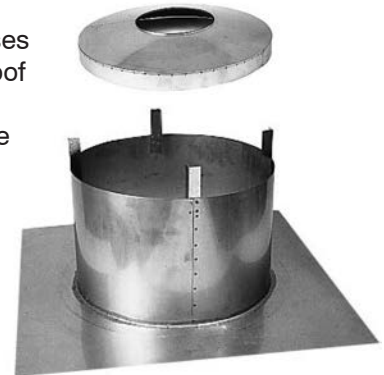
1. Model PS part used for IPSC1 applications.

Ventilated Roof Thimble Assembly

Code:

MVT

For use where pipe passes through a combustible roof or structure. Also guides the chimney 6" above the roof line.



Materials Available:

Aluminized or Galvanized Steel	304	316
--------------------------------	-----	-----

Ordered Part Includes:

One THB, one FR, one VTF, and one VSC.

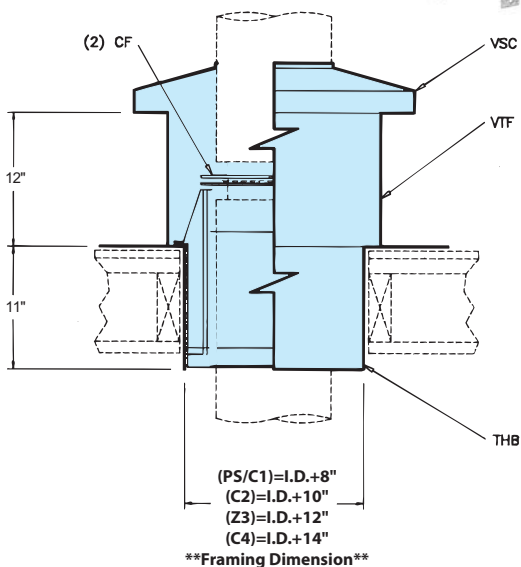
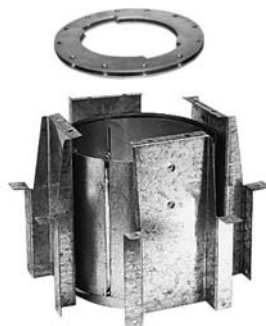
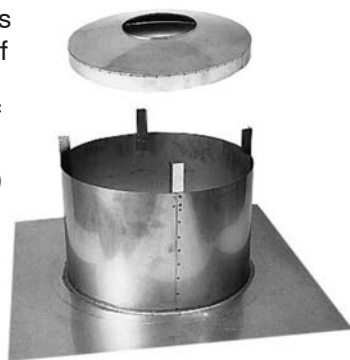
Notes:

1. Model PS part used for IPSC1 applications.

Ventilated Roof Support Assembly

Code:
MRS

For use where pipe passes through a combustible roof or structure. Supports the chimney 6" above the roof line which may require an expansion joint (AG or BJ) below the roof.



Materials Available:

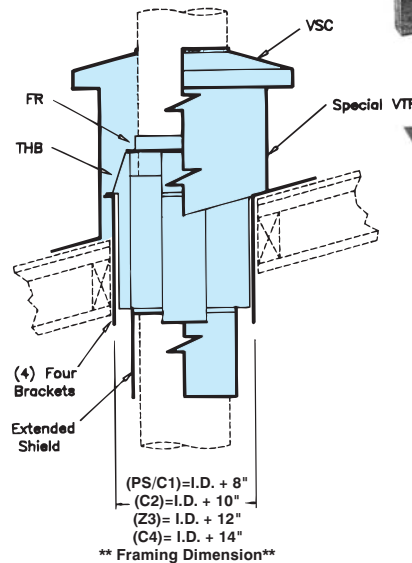
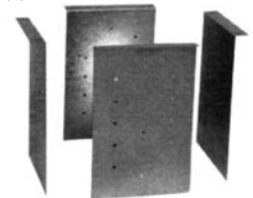
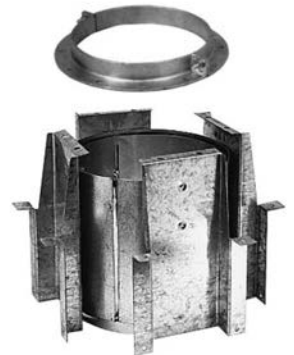
Aluminized or Galvanized Steel		304	316
--------------------------------	--	-----	-----

Ordered Part Includes:
One THB, two CF's, one VTF, and one VSC.

Pitched Ventilated Roof Thimble

Code:
PVT

For use when pipe passes through a combustible pitched roof or structure. Above 24" sizes and steep pitches are not available.



Materials Available:

Aluminized or Galvanized Steel		304	316
--------------------------------	--	-----	-----

Ordered Part Includes:

One THB, 4 brackets, extended shield, special VTF, one FR, and one VSC.

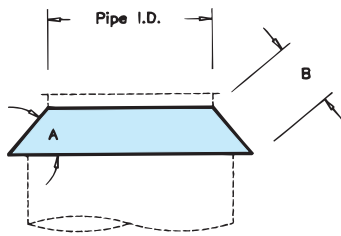
Notes:

1. Does not provide lateral support. An additional FR is required below the roof.
2. May require extra manufacturing time and is non-returnable.
3. Model PS part used for IPSC1 applications.

Open Stack Closure Ring

Code:
CR

Protects the insulated space between standard pipe inner and outer. Requires a drain at base of stack.



Materials Available:



Ordered Part Includes:
CR, plus hardware.

Notes:

1. Model PS part used for IPSC1 applications.

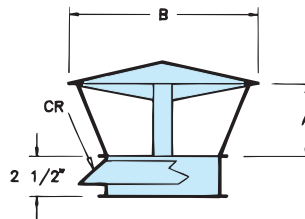
Product	Dimensions	
	A	B
PS/C1	50°	3"
IPS-C2	32°	3 1/2"
IPS-Z3	25°	4 1/2"
IPS-C4	17°	5 1/4"

Stack Cap

Code:
SK

Provides partial protection with low flow resistance. May require a drain at base of stack.

Note: Not permitted for CATII applications.



Materials Available:



Ordered Part Includes:

SK, plus one CR, one HCB and one VB.

Notes:

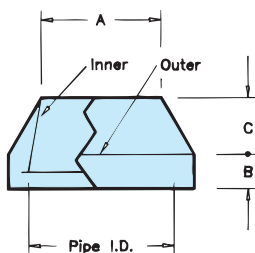
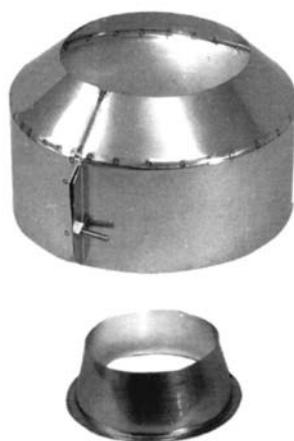
1. Model PS part used for IPSC1 applications.
2. K = 0.5 Flow Resistance Factor
3. Optional Birdscreen available

Product (pipe I.D.)	Dimensions (inches)	
	A	B
PS IPSC1 IPSC2 IPSC4 IPS-Z3 IPS-Z4		
5	2 1/2	10 1/4
6	3	10 1/4
8	4	13 5/8
10	5	17
12	6	20 1/2
14	7	24
16	8	27 3/8
18	9	30 3/4
20	10	34 1/8
22	11	37 5/8
24	12	41
26	13	44 3/8
28	14	47 7/8
30	15	51 1/4
32	16	54 5/8
36	18	61 1/2
42	21	71 3/4
48	24	82

Insulated Exit Cone

Code:
EC

Will increase stack exit velocity 1 1/2 times. Requires a drain at bottom of stack.



Materials Available:

- 316
- 316/316

Ordered Part Includes:
One inner cone, one outer finish collar, and one VB.

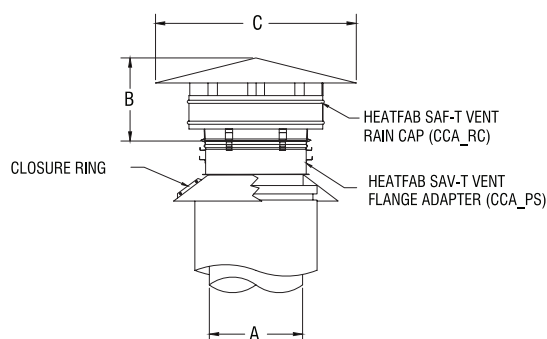
Notes:
1. $K = 1.25$
Flow Resistance

Product (Pipe I.D.)	Dimensions (Inches)		
	A	B	C
All Models			
5	4 7/8	4	1 3/8
6	4 7/8	4	1 1/2
8	6 9/16	4	1 3/4
10	8 3/16	4	3 3/8
12	9 7/8	4	3 3/4
14	11 1/2	4	4
16	13 1/16	6	4 3/8
18	14 3/4	6	4 5/8
20	16 5/16	6	5
22	18	6	5 1/4
24	19 5/8	6	5 5/8
26	21 1/4	6	6
28	22 7/8	8	6 1/4
30	24 1/2	8	6 5/8
32	26 1/8	8	6 7/8
36	29 3/8	10	7 1/2
42	34 5/16	12	8 1/2
48	39 3/16	12	9 1/2

Rain Cap

Code:
CCA

Provides the greatest degree of wind protection and required for use on Category II applications. Sizes available are from 5"-32". Rain cap adapts to PS/IPS pipe models via the following parts ordered separately: Saf-T Vent Double Flange Adapter (CCA_PS), Open Stack Closure Ring (CR) and Vee-Band (VB). Reference illustration and table below.



Materials Available:

- 29-4C

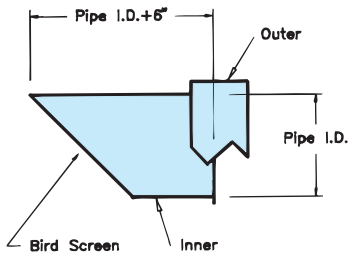
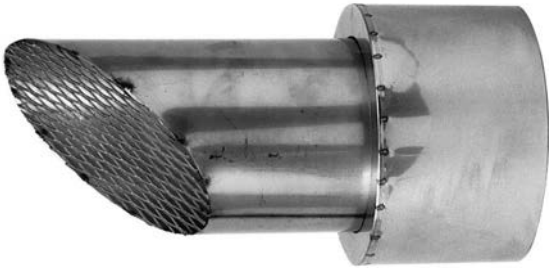
Product (Pipe I.D.)	Saf-T Vent Rain Cap Part Number	Saf-T Vent Flange Adapter Part Number	Dimensions		
			A	B	C
5	CCA05RC	CCA05PS	5	8.5	14
6	CCA06RC	CCA06PS	6	8.5	14
8	CCA08RC	CCA08PS	8	9.5	18
10	CCA10RC	CCA10PS	10	9.5	20
12	CCA12RC	CCA12PS	12	9.5	24
14	CCA14RC	CCA14PS	14	11.5	28
16	CCA16RC	CCA16PS	16	13.5	32
18	CCA18RC	CCA18PS	18	15.5	36
20	CCA20RC	CCA20PS	20	17.5	36
22	CCA22RC	CCA22PS	22	19.5	44
24	CCA24RC	CCA24PS	24	19.5	48
26	CCA26RC	CCA26PS	26	25	52
28	CCA28RC	CCA28PS	28	25	52
30	CCA30RC	CCA30PS	30	25	52
32	CCA32RC	CCA32PS	32	25	52

Miter Cut

Code:

MC

Used for horizontal engine exhaust termination.



Materials Available:

316/316

Ordered Part Includes:

One inner with bird screen, one outer finish collar, and one VB.

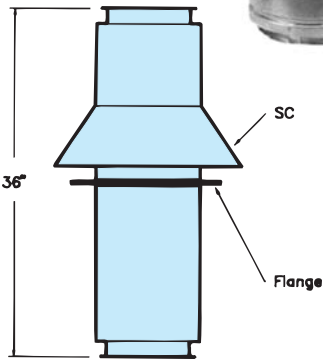
Notes:

1. The 1/2" mesh-pattern bird screen has a 60 percent open area.
2. $K = 1.25$ Flow Resistance Factor

Guy Section

Code:
GS

A rigid, factory-welded section for attaching guys to chimney stack.



Materials Available:

- 316/Alum
- 316/304
- 316/316

Ordered Part Includes:
Welded pipe section, with painted carbon steel flange, storm collar SC, one AS, one VB and one CB.

- Notes:
1. Flange has 13/16" diameter holes, 30° apart.
 2. Flow Resistance Factor (K) is the same as insulated pipe.

Through-Penetration Firestop

Code:
TPF

Use when penetrating a 2 hour fire-rated floor or wall with IPS-Z3 or IPS-Z4 grease duct.



Materials Available:

- | | |
|------------------|----------------------------|
| Aluminized Steel | 304 or 316 Stainless Steel |
|------------------|----------------------------|

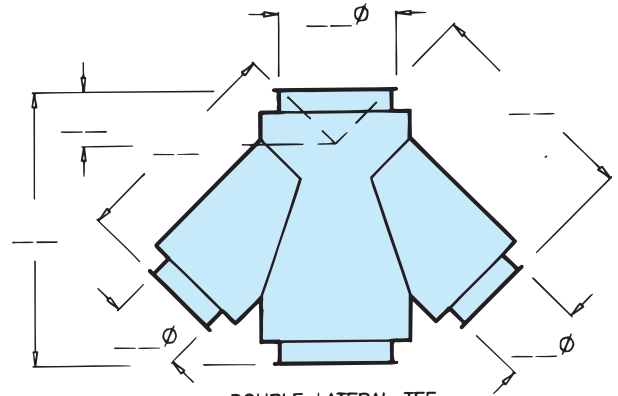
Ordered Part Includes:
One closure band, two cover plate halves, 12-inch wide insulation strip and one 4-inch insulation strip.

- Notes:
1. For use with IPS-Z3 and IPS-Z4 grease duct only
 2. One kit required for a floor penetration and two kits required for wall penetrations.

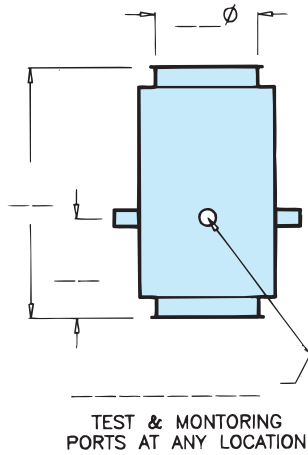
Special Parts

Several special parts, such as those shown here, are available upon request.

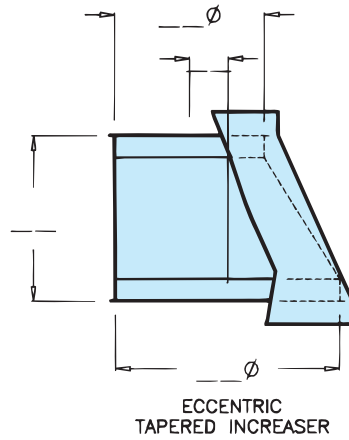
Please provide detail of the required part if not already designed by Selkirk, and allow extra manufacturing time. Special parts are non-returnable.



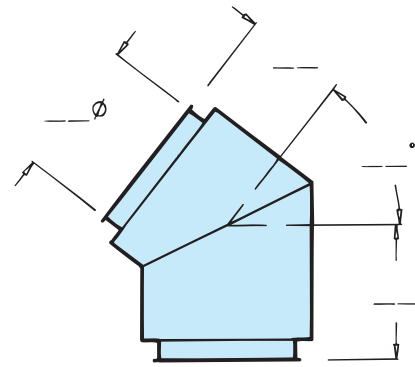
DOUBLE LATERAL TEE
PART CODE: DJL



TEST & MONITORING
PORTS AT ANY LOCATION

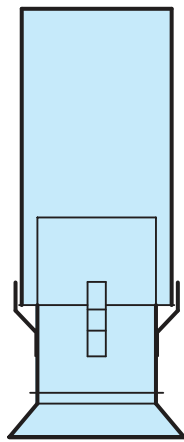


ECCENTRIC
TAPERED INCREASER

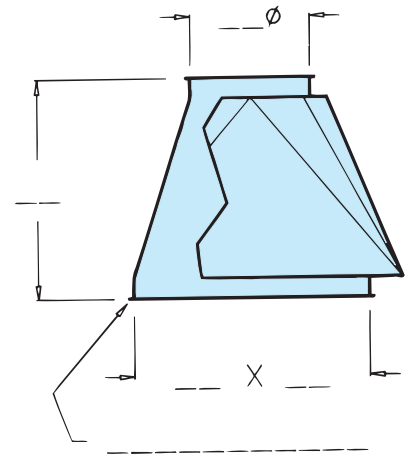


SPECIAL DIMENSIONS
ON ANY FITTING

SPECIAL DIMENSIONS
ON ANY FITTING



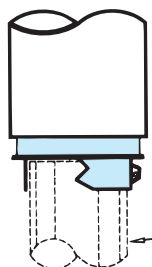
WEATHERHEAD



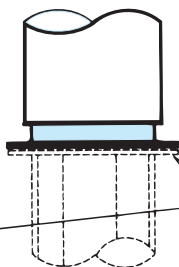
RECTANGULAR/SQUARE TO
ROUND TRANSITIONS

SINGLE WALL PART CODE: x SWA

DOUBLE WALL PART CODE: x DWA



SPECIAL DIAMETER
SEAL RING



SPECIAL
FLANGE ADAPTER

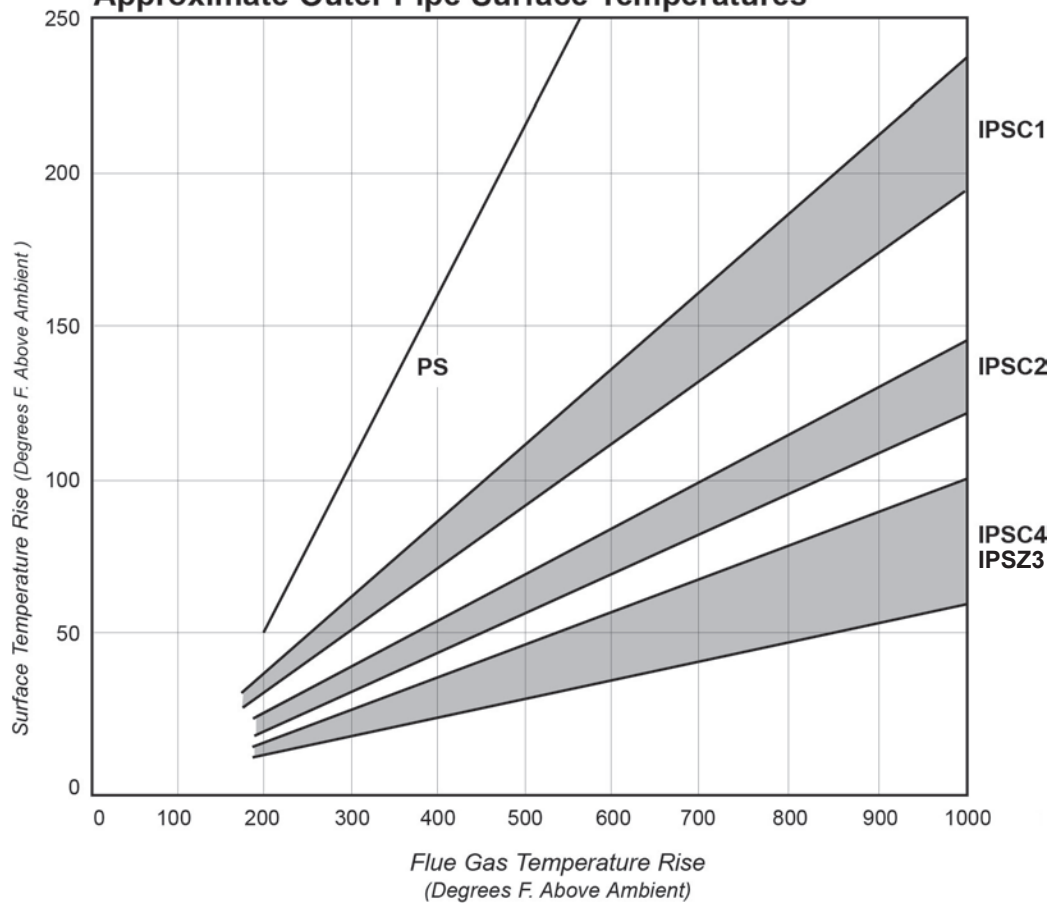
PROVIDE PRECISE DETAIL
OF EXISTING PIPE OR
FLANGE FOR ATTACHMENT

Material Thickness - Model PS/IPS

Diameter	Inner		Outer	
	Gauge *	Material	Gauge*	Material
5"-32"	20	.035" - 316 SS	24	.025" Alum Steel or 304 & 316 SS
	20		24	
36"	20	.035" - 316 SS	21	.034" Alum Steel or .034" 304 & 316 SS
	20		20	
38"-48"	18	.048" - 304 & 316 SS	21	.034" Alum Steel or .035" 304 & 316 SS
	18		20	

* Gauge is approximate.

Approximate Outer Pipe Surface Temperatures



Operating Temperatures and Clearances to Combustibles

Table I-1: Model PS316 and IPS316 Min. Airspace Clearance-to-Combustible Construction					
Model	Pipe ID	Max. Appliance Operating Temperature	Clearance to Combustible Material	Orientation	Enclosure
PS/IPS	5-12"	230°F*	0"	Vert. & Horiz.	Fully Enclosed
PS/IPS	14-48"	194°F*			
PS/IPS	5-24"	550°F	1"	Vert.	Fully Enclosed
PS	26-48"	480°F	2"	Vert.	Fully Enclosed
IPS	26-48"		1"		
IPS	5-24"	550°F	3"	Vert. & Horiz.	Fully Enclosed
PS/IPS	5-8"	550°F	1"	Horiz.	Unenclosed
PS/IPS	10-12"		2"		
PS/IPS	14-32"		3"		
PS/IPS	34-48"		6"		
IPS-Z3	5-36"	500°F	0"	Vert. & Horiz.	Unenclosed

* Permitted to be fully enclosed with combustibles at 0" clearance per ULC-S636



BUILD FOR THE FUTURE

Customer Service and Support:

Airmate (USA).....	800.992.8368
Airmate (CAN)	888.735.5475
Ameriflow	800.252.8467
Amerivent (Retail).....	800.252.8467
Amerivent (Hearth & Wholesale)	800.423.4270
Amerivent (Support).....	800.748.0392
AMPCO (USA)	800.669.3269
AMPCO (CAN).....	888.735.5475
Duravent	800.835.4429
Hart & Cooley.....	800.433.6341
Hart & Cooley (Support)	800.748.0392
Heatfab (USA).....	800.772.0739
Heatfab (CAN)	800.848.2149
Lima.....	800.423.4270
Milcor	800.774.5240
Portals Plus.....	800.774.5240
RPS.....	800.624.8642
Security Chimney (USA).....	800.361.4909
Security Chimney (CAN)	800.667.3387
Selkirk (USA) Residential	800.992.8368
Selkirk (USA) Commercial.....	800.848.2149
Selkirk (USA) Support.....	800.748.0392
Selkirk (CAN).....	888.735.5475

Manufacturing & Distribution Centers:

CANADA	
Nobel, ON	Manufacturing
Laval, QC	Manufacturing
Prescott, ON	Distribution
USA	
Grand Rapids, MI	Center of Excellence
Dallas, TX	Distribution
Englewood, OH	Distribution
Huntsville, AL	Manufacturing & Distribution
Mira Loma, CA	Distribution
Nampa, ID	Manufacturing & Distribution
Turner Falls, MA	Manufacturing & Distribution
Vacaville, CA	Manufacturing
MEXICO	
Ojinaga, MX	Manufacturing
Mexicali, MX	Manufacturing

Corporate Headquarters:

Duravent Group
28 W. Adams, Suite 1810
Detroit, MI 48226
Tel: 800.835.4429
Email: info@duraventgroup.com
www.duraventgroup.com



BUILD FOR THE FUTURE

www.duraventgroup.com

