

# Ultimate Pellet Pipe



## TABLE OF CONTENTS

### Ultimate Pellet Pipe

Technical Information .....	3
Product Descriptions and Dimensions .....	4-13
Pellet Pipe Kits .....	14

**Ultimate Pellet Pipe** is a premiere venting system designed with the installer in mind. Fast, sealed and secure assembly coupled with laser-welded seams and smooth joint connections create a pipe system that is sleek and beautiful.



No need for silicone sealant with Ultimate Pellet Pipe. The gasket design seals the pipe tight, eliminating the need for silicone at the seams.

Offer your customers a superior pellet venting solution, Ultimate Pellet Pipe features:



- Easy to assemble
- Silicone gasket sealed
- Laser-welded seams
- Smooth joint connections
- 360° Lock-Tab secure rotation
- Lock-Tab allows for easy dismantling for inspection and cleaning
- 300 Series stainless steel inner, galvalume outer
- Complete offering of painted pipe, fittings, and components
- 1" Clearance to combustibles



**The Ultimate Hearth Solution for Pellet Stove Venting**

**Stainless Steel and Galvalume Construction**

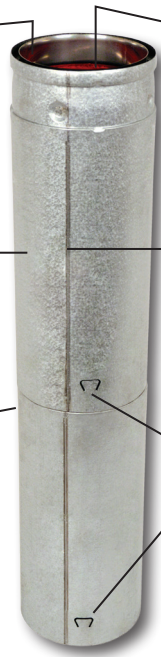
The Ultimate Pellet Pipe's inner pipe is made of 300 series stainless steel which provides exceptional corrosion resistance. The outer pipe is manufactured with galvalume steel, for superior protection against harsh outdoor elements.

**High Temperature Paint or Galvalume Exterior**

Ultimate Pellet Pipe is available finished in a matte black or unpainted galvalume. Our high temperature matte black paint will withstand temperatures up to 1200° F and look beautiful for years.

**Smooth Joint Connections**

Our unique end forming process creates a connection joint that provides a smooth, clean profile. The gasket within the pipe seals the connection tight, providing a superior, leak-free connection.



**Gasket Technology**

Say goodbye to messy silicone to seal those joints. Ultimate Pellet Pipe's superior silicone gasket technology seals the system and eliminates fly ash from escaping. Easy to assemble. Easy to take apart for inspection and cleaning. Ultimate Pellet Pipe's silicone gasket technology has been field proven for more than 15 years.

**Laser-Welded Seams**

Both the inner and outer pipes are laser-welded, creating a smooth seam and consistently round pipe. No seam, tight seal, no problem!

**Lock-Tab™ Security**

Ultimate Pellet Pipe features a female end Lock-Tab system. When engaged, the Lock-Tab will securely hold pipe in place, allowing 360° rotation. This unique feature is easy to engage and disengage. Fast, easy, and secure!

**Specifications and Dimensions**

Model UPP has been tested and listed by Underwriters Laboratories Inc. in accordance with:

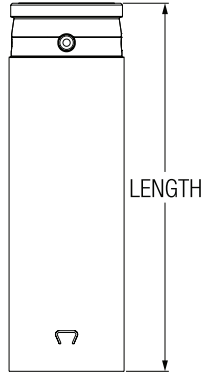
US Standards	UL641: Type L low temperature venting systems
	UL103 (applicable portions of): The standard for residential type and building heating appliance chimneys
Canadian Standards	CAN/ULC-609: Low temperature type L vents

US Standard for Chimneys, Fireplaces, Vents and Solid Fuel Burning Appliances, NFPA-211

Canadian Installation Code for Solid Fuel Burning Appliances and Equipment, CSA-B365

The UPP system is rated for flue temperatures up to 570°F/ 300°C and is backed by our Smart Choice Warranty

LENGTHS



Lengths

- Available in lengths of 6", 12", 18", 24", 36" and 60"
- 1 3/4" overlap at joints
- Painted black or unpainted

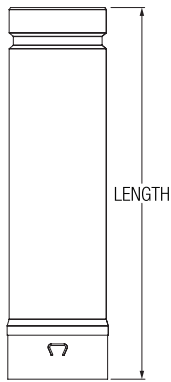
PART #	PRODUCT CODE	FINISH	LENGTH
--------	--------------	--------	--------

3" Diameter

3UPP-6	823000		6"
3UPP-6B	823000B	Black	6"
3UPP-12	823001		12"
3UPP-12B	823001B	Black	12"
3UPP-18	823002		18"
3UPP-18B	823002B	Black	18"
3UPP-24	823003		24"
3UPP-24B	823003B	Black	24"
3UPP-36	823004		36"
3UPP-36B	823004B	Black	36"
3UPP-60	823005		60"
3UPP-60B	823005B	Black	60"

4" Diameter

4UPP-6	824000		6"
4UPP-6B	824000B	Black	6"
4UPP-12	824001		12"
4UPP-12B	824001B	Black	12"
4UPP-18	824002		18"
4UPP-18B	824002B	Black	18"
4UPP-24	824003		24"
4UPP-24B	824003B	Black	24"
4UPP-36	824004		36"
4UPP-36B	824004B	Black	36"
4UPP-60	824005		60"
4UPP-60B	824005B	Black	60"



Adjustable Lengths

- Eliminates the need to field cut
- Adjustable up to 9 1/2" by simply sliding inside a UPP fixed length
- Features a factory installed O-ring
- Painted black or unpainted

PART #	PRODUCT CODE	FINISH	LENGTH
--------	--------------	--------	--------

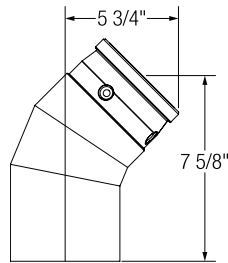
3" Diameter

3UPP-12A	823007		Adj. 12"
3UPP-12AB	823007B	Black	Adj. 12"

4" Diameter

4UPP-12A	824007		Adj. 12"
4UPP-12AB	824007B	Black	Adj. 12"

**ELBOWS**



**45° Elbow**

- Used as an offset around an obstruction
- Painted black or unpainted
- Can be used as a termination when accompanied by a Screen Cap

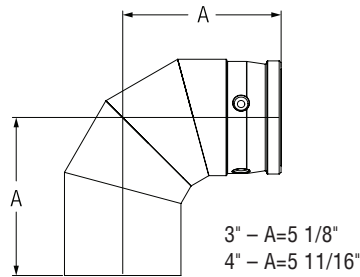
**PART # PRODUCT CODE FINISH**

**3" Diameter**

3UPP-45E	823008	
3UPP-45EB	823008B	Black

**4" Diameter**

4UPP-45E	824008	
4UPP-45EB	824008B	Black



**90° Elbow**

- Used as an offset around an obstruction
- Painted black or unpainted

**PART # PRODUCT CODE FINISH**

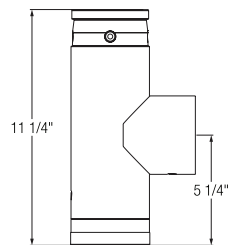
**3" Diameter**

3UPP-90E	823006	
3UPP-90EB	823006B	Black

**4" Diameter**

4UPP-90E	824006	
4UPP-90EB	824006B	Black

**TEE COMPONENTS**



**Tee with Tee Cap**

- Used to transition from horizontal to vertical orientation
- Provides easy access for inspection and maintenance
- Includes Tee Cap
- Painted black or unpainted

**PART # PRODUCT CODE FINISH DESCRIPTION**

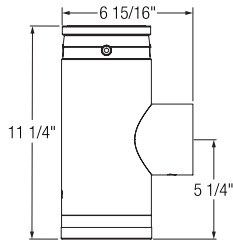
**3" Diameter**

3UPP-T	823009		Tee w/Tee Cap
3UPP-TB	823009B	Black	
3UPP-TA	823022		Tee w/Tee Cap & Appliance Adapter
3UPP-TAB	823022B	Black	

**4" Diameter**

4UPP-T	824009		Tee w/Tee Cap
4UPP-TB	824009B	Black	
4UPP-TA	824022		Tee w/Tee Cap & Appliance Adapter
4UPP-TAB	824022B	Black	

TEE COMPONENTS (CONTINUED)



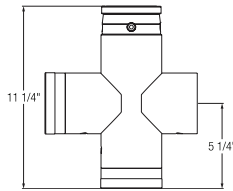
**Increaser Tee with Tee Cap**

- Used to transition from horizontal to vertical orientation
- Converts a 3" appliance to a 4" UPP system
- Provides easy access for inspection and maintenance
- Includes Tee Cap
- Painted black or unpainted

PART # PRODUCT CODE FINISH

3" Diameter

3UPP-IT	823023	
3UPP-ITB	823023B	Black



**Double Tee with Tee Caps**

- Used to transition from horizontal to vertical orientation
- Allows horizontal or vertical cleaning access and inspection
- Includes two Tee Caps
- Painted black or unpainted

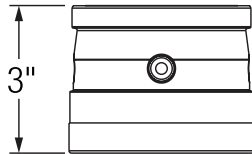
PART # PRODUCT CODE FINISH

3" Diameter

3UPP-DT	823018	
3UPP-DTB	823018B	Black

4" Diameter

4UPP-DT	824018	
4UPP-DTB	824018B	Black



**Tee Cap**

- Use as a replacement

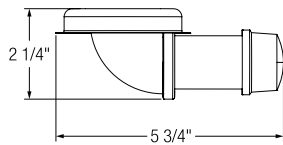
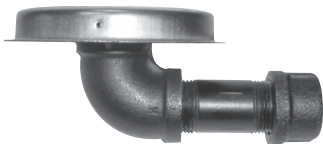
PART # PRODUCT CODE FINISH

3" Diameter

3UPP-TC	823016	
3UPP-TCB	823016B	Black

4" Diameter

4UPP-TC	824016	
4UPP-TCB	824016B	Black



**Vacuum Clean-Out Cap**

- Replaces the existing Tee Cap
- Used to clean the vent with no mess

PART # PRODUCT CODE

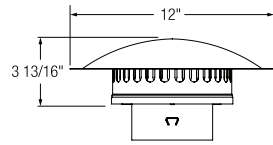
3" Diameter

3UPP-VCC	823024
----------	--------

4" Diameter

4UPP-VCC	824024
----------	--------

**RAIN CAPS**



**Vertical Termination Cap**

- Vent termination for a vertical, through-the-roof installation
- Designed to prevent rain and snow from entering the vent

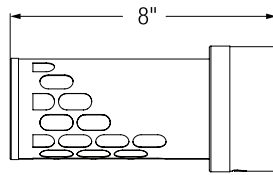
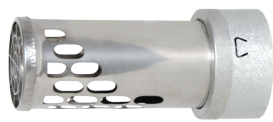
**PART # PRODUCT CODE**

**3" Diameter**

3UPP-VC	823014
---------	--------

**4" Diameter**

4UPP-VC	824014
---------	--------



**Horizontal Termination**

- Vent termination for a horizontal through-the-wall installation

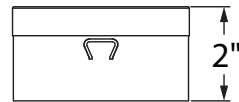
**PART # PRODUCT CODE**

**3" Diameter**

3UPP-HC	823020
---------	--------

**4" Diameter**

4UPP-HC	824020
---------	--------



**Screen Cap**

- Must be used in conjunction with a 45° Elbow to serve as a horizontal termination

**PART # PRODUCT CODE**

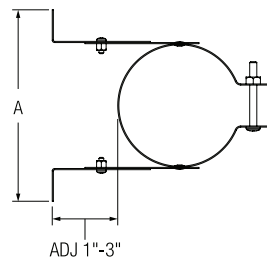
**3" Diameter**

3UPP-45T	823034
----------	--------

**4" Diameter**

4UPP-45T	824034
----------	--------

**WALL BAND**



**Adjustable Wall Band**

- Stabilize and support a vertical or horizontal run of pipe
- Clearance distance adjustable from 1" to 3"

**PART # PRODUCT CODE**

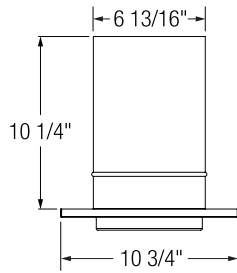
**3" Diameter**

3UPP-WB	823019
---------	--------

**4" Diameter**

4UPP-WB	824019
---------	--------

**CEILING SUPPORT**



**Ceiling Support**

- Used to support UPP from below the ceiling joist
- Maintains 1" clearance to combustibles
- Trim plate is painted black

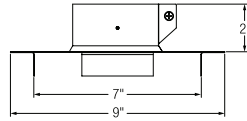
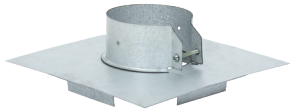
**PART # PRODUCT CODE FINISH**

**3" Diameter**

3UPP-CSB	823012	Black
----------	--------	-------

**4" Diameter**

4UPP-CSB	824012	Black
----------	--------	-------



**Ceiling Support / Firestop**

- Used to support UPP from above the ceiling joist
- Maintains 1" clearance to combustibles

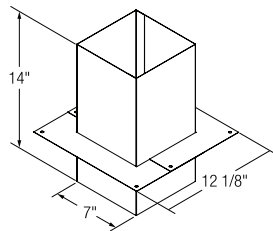
**PART # PRODUCT CODE FINISH**

**3" Diameter**

3UPP-FCS	823047	
----------	--------	--

**4" Diameter**

4UPP-FCS	824047	
----------	--------	--



**Cathedral Ceiling Support**

- Used to support UPP in a cathedral or sloped ceiling installation
- Maintains clearance to combustibles
- Painted black

**PART # PRODUCT CODE FINISH**

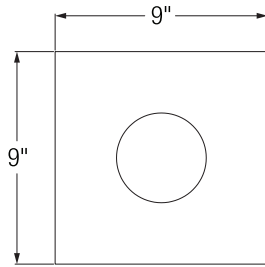
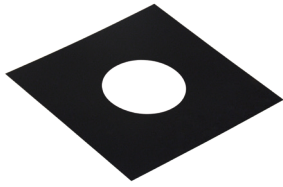
**3" Diameter**

3UPP-CCS	823031	Black
----------	--------	-------

**4" Diameter**

4UPP-CCS	824031	Black
----------	--------	-------

**TRIM COLLAR** **PART #** **PRODUCT CODE** **FINISH**

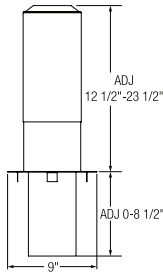


3" Diameter		
3UPP-TP	823032	Black
4" Diameter		
4UPP-TP	824032	Black

**Trim Collar**

- Finishing plate used at the ceiling level or on a sidewall
- Maintains clearance to combustibles
- Painted black

**SHIELDS** **PART #** **PRODUCT CODE**

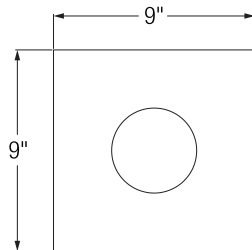


3" Diameter	
3UPP-AIS	823010
4" Diameter	
4UPP-AIS	824010

**Attic Insulation Shield**

- Used in the attic to guard against the hazard of blown-in or blanket Insulation
- Maintains a 1" clearance to combustibles
- Adjust up to 23 1/2"
- Includes a drop-down joist shield to protect the joist area

**FIRESTOP** **PART #** **PRODUCT CODE**

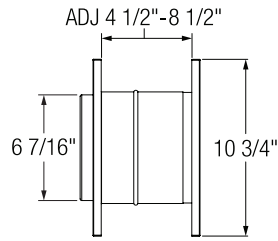
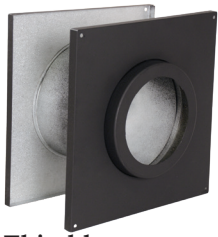


3" Diameter	
3UPP-FS	823011
4" Diameter	
4UPP-FS	824011

**Firestop**

- Used to protect combustible materials where UPP passes through a ceiling
- Can also be used at the soffit level in an exterior installation

**WALL THIMBLE**



**Wall Thimble**

- Used in a combustible through-the-wall installation
- Maintains clearance to combustibles
- Adjustable for 4 1/2" to 8 1/2" thick walls
- Painted black

**PART # PRODUCT CODE FINISH**

**3" Diameter**

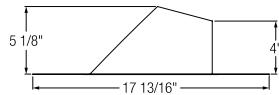
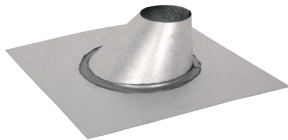
3UPP-WTB	823013	Black
----------	--------	-------

**4" Diameter**

4UPP-WTB	824013	Black
----------	--------	-------

**FLASHINGS**

**PART # PRODUCT CODE PITCH**



**Adjustable Flashing**

- Weatherproof the installation through a pitched roof
- For pitches of 0/12 to 6/12 and pitches of 6/12 to 12/12

**3" Diameter**

3UPP-F6	823035	1/12 to 6/12
---------	--------	--------------

3UPP-F12	823036	6/12 to 12/12
----------	--------	---------------

**4" Diameter**

4UPP-F6	824035	1/12 to 6/12
---------	--------	--------------

4UPP-F12	824036	6/12 to 12/12
----------	--------	---------------

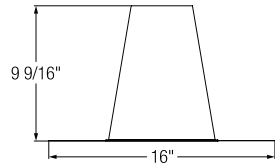
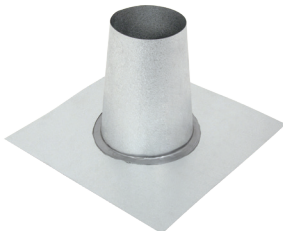
**PART # PRODUCT CODE**

**3" Diameter**

3UPP-TF	823015
---------	--------

**4" Diameter**

4UPP-TF	824015
---------	--------



**Tall Cone Flashing**

- Weatherproof the installation through a flat roof

**STORM COLLAR**

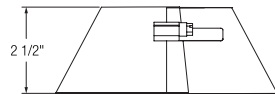
**PART # PRODUCT CODE**

**3" Diameter**

3UPP-SC	823021
---------	--------

**4" Diameter**

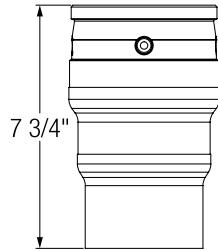
4UPP-SC	824021
---------	--------



**Storm Collar**

- Maintain a weather tight seal between the vent and the roof flashing
- Silicone must be applied (not included)

**ADAPTERS**



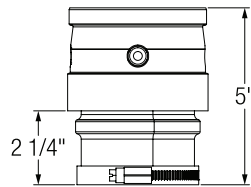
**3" to 4" Increaser**

- Transition from a 3" to a 4" UPP
- Painted black or unpainted

PART #	PRODUCT CODE	FINISH
--------	--------------	--------

**3" Diameter**

3UPP-I4	823025	
3UPP-I4B	823025B	Black



**Appliance Adapter**

- Attach to the appliance for connection to UPP

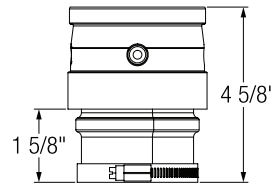
PART #	PRODUCT CODE	FINISH
--------	--------------	--------

**3" Diameter**

3UPP-AA	823017	
3UPP-AAB	823017B	Black

**4" Diameter**

4UPP-AA	824017	
4UPP-AAB	824017B	Black



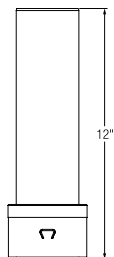
**Multi-Fit Connector**

- Adjustable, 3" appliance adapter
- Increases vent from 3" to 4"

PART #	PRODUCT CODE	FINISH
--------	--------------	--------

**4" Diameter**

4UPP-MFC	824055	
----------	--------	--



**Masonry Adapter**

- Adapt UPP to a masonry chimney

PART #	PRODUCT CODE
--------	--------------

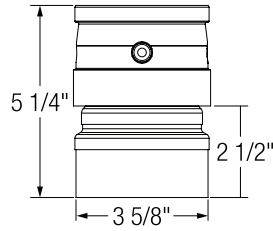
**3" Diameter**

3UPP-MA	823033
---------	--------

**4" Diameter**

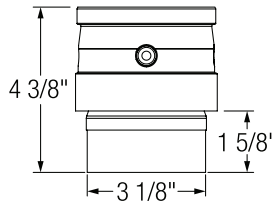
4UPP-MA	824033
---------	--------

ADAPTERS (CONTINUED)



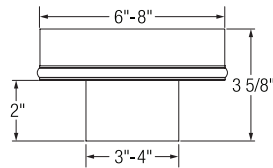
Harman Pipe Adapter - Outside

- Harman appliance outlet for easy pipe connection



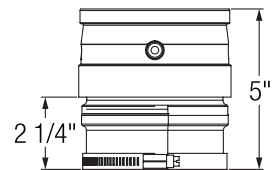
Harman Pipe Adapter - Inside

- Attaches a Harman appliance to UPP



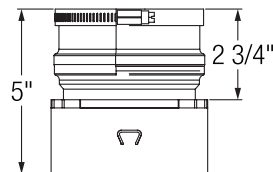
Chimney Adapter

- Transition from UPP to a Class A insulated chimney



Flex Connector

- Transition from a flexible stainless steel liner to UPP



Reverse Flex Connector

- Transition from UPP to a flexible stainless steel liner

PART # PRODUCT CODE

3" Diameter

3UPP-HAA1	823028
-----------	--------

PART # PRODUCT CODE

3" Diameter

3UPP-HAA2	823029
-----------	--------

PART # PRODUCT CODE SIZE

3" Diameter

3UPP-CA6	823038	6"
3UPP-CA8	823039	8"

4" Diameter

4UPP-CA6	824038	6"
4UPP-CA8	824039	8"

PART # PRODUCT CODE

4" Diameter

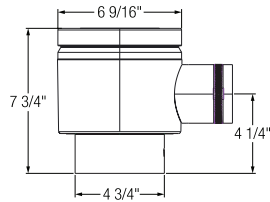
4UPP-FC	824026
---------	--------

PART # PRODUCT CODE

4" Diameter

4UPP-FCR	824027
----------	--------

**ADAPTERS (CONTINUED)** **PART #** **PRODUCT CODE**



4" Diameter

4UPP-DTA	824037
----------	--------

**Direct-Temp Adapter**

- Transition from UPP pipe to Direct-Temp direct vent system



**PART #** **PRODUCT CODE**

4" Diameter

4DT-UPPSAL	1604840
------------	---------

**Low Profile Direct-Temp Adapter**

- Transition from UPP to Direct-Temp system
- Fresh air intake nozzle
- 3/4" Shorter than 4UPP-DTA



**PART #** **PRODUCT CODE**

4" Diameter

4DT-UPPSA45	1604841
-------------	---------

**45° Direct-Temp Adapter**

- Transition from UPP to Direct-Temp system
- Adjustable fresh air intake nozzle (3 positions)

**MISCELLANEOUS** **PART #** **SIZE**

7001 SIL	Single Use Lubricant Packet
7001 SIL-5	5oz. Lubricant Tube

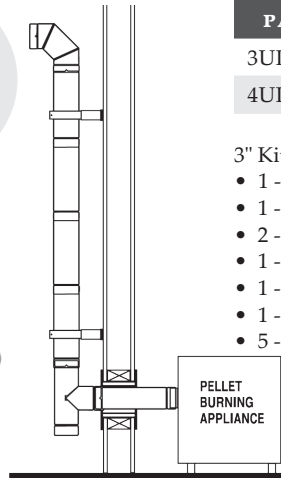


**Lubricant**

- To lubricate UPP gaskets for easier assembly and dismanteling

PELLET PIPE KITS

THROUGH THE WALL KIT



PART #	PRODUCT CODE	SIZE
3UPP-TWK	823044	3" Kit
4UPP-TWK	824044	4" Kit

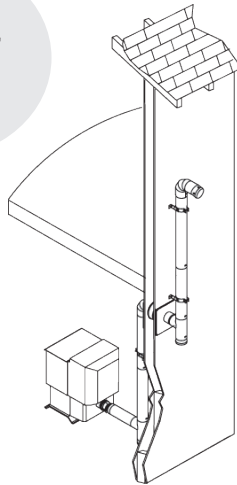
3" Kit Contains:

- 1 - Horizontal Termination (3")
- 1 - 90° Elbow (3")
- 2 - Adjustable Wall Band (3")
- 1 - Appliance Adapter (3")
- 1 - Wall Thimble (3")
- 1 - Tee with Tee Cap (3")
- 5 - 12" Pipe Length (3")

4" Kit Contains:

- 1 - Horizontal Termination (4")
- 1 - 90° Elbow (4")
- 2 - Adjustable Wall Band (4")
- 1 - Appliance Adapter (3")
- 1 - Appliance Adapter (4")
- 1 - 3" to 4" Increaser
- 1 - Wall Thimble (4")
- 1 - Tee with Tee Cap (4")
- 5 - 12" Pipe Length (4")

BASEMENT KIT

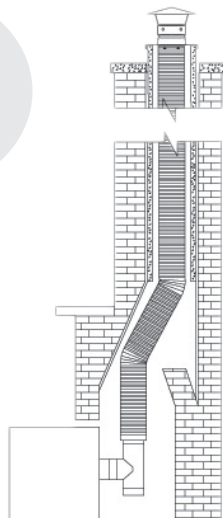


PART #	PRODUCT CODE	SIZE
4UPP-BK	824045	4" Kit

4" Kit Contains:

- 1 - Horizontal Termination (4")
- 1 - Appliance Adapter (3")
- 1 - Appliance Adapter (4")
- 1 - 3" to 4" Increaser
- 1 - Wall Thimble (4")
- 2 - Tee with Tee Cap (4")
- 3 - Adjustable Wall Band (4")
- 2 - 90° Elbow (4")
- 2 - 12" Pipe Length (4")
- 4 - 24" Pipe Length (4")

INSERT FLEX KIT



PART #	PRODUCT CODE	SIZE
4UPP-IK25	824042	25' Kit
4UPP-IK35	824043	35' Kit

25' Kit Contains:

- 1 - 25' of 4" Stainless Flex
- 1 - Increaser Tee w/Tee Cap (4")
- 1 - Reverse Flex Connector (4")
- 1 - 4" Termination Cap
- 1 - 4" Flex Flashing Connector
- 1 - 4" Flashing/Support
- 1 - Appliance Adapter 3"
- 1 - Silicone Sealant

35' Kit Contains:

- 1 - 35' of 4" Stainless Flex
- 1 - Increaser Tee with Tee Cap (4")
- 1 - Reverse Flex Connector (4")
- 1 - 4" Termination Cap
- 1 - 4" Flex Flashing Connector
- 1 - 4" Flashing/Support
- 1 - Appliance Adapter 3"
- 1 - Silicone Sealant



BUILD FOR THE FUTURE

## Our Portfolio of Brands

AirMate® .....	<a href="http://www.airmate.com">www.airmate.com</a>
AmeriFlow® .....	<a href="http://www.ameriflowregisters.com">www.ameriflowregisters.com</a>
Amerivent® .....	<a href="http://www.ameri-vent.com">www.ameri-vent.com</a>
AMPCO® .....	<a href="http://www.ampcostacks.com">www.ampcostacks.com</a>
Builder's Best® .....	<a href="http://www.buildersbest.com">www.buildersbest.com</a>
Duravent™ .....	<a href="http://www.duravent.com">www.duravent.com</a>
Hart & Cooley® .....	<a href="http://www.hartandcooley.com">www.hartandcooley.com</a>
Heatfab® .....	<a href="http://www.heatfab.com">www.heatfab.com</a>
Lima® .....	<a href="http://www.limaregister.com">www.limaregister.com</a>
Milcor® .....	<a href="http://www.milcorinc.com">www.milcorinc.com</a>
Portals Plus™ .....	<a href="http://www.portalsplus.com">www.portalsplus.com</a>
RPS™ .....	<a href="http://www.rpscurbs.com">www.rpscurbs.com</a>
Security Chimneys® .....	<a href="http://www.securitychimneys.com">www.securitychimneys.com</a>
Selkirk® .....	<a href="http://www.selkirkcorp.com">www.selkirkcorp.com</a>

## Corporate Headquarters

Duravent Group  
28 W. Adams, Suite 1810  
Detroit, MI 48226  
Tel: 800.835.4429  
Email: [info@duraventgroup.com](mailto:info@duraventgroup.com)  
[www.duraventgroup.com](http://www.duraventgroup.com)

## Contact Us

For more information about our products or to contact us directly, please go to any of our websites and click on the Contact section on the website.

 AMERIVENT®

 SELKIRK®

**duravent**<sup>™</sup>  
GROUP

BUILD FOR THE FUTURE

[www.duraventgroup.com](http://www.duraventgroup.com)



For warranty information:  
Scan this QR code or visit  
[www.duraventgroup.com/warranties](http://www.duraventgroup.com/warranties)