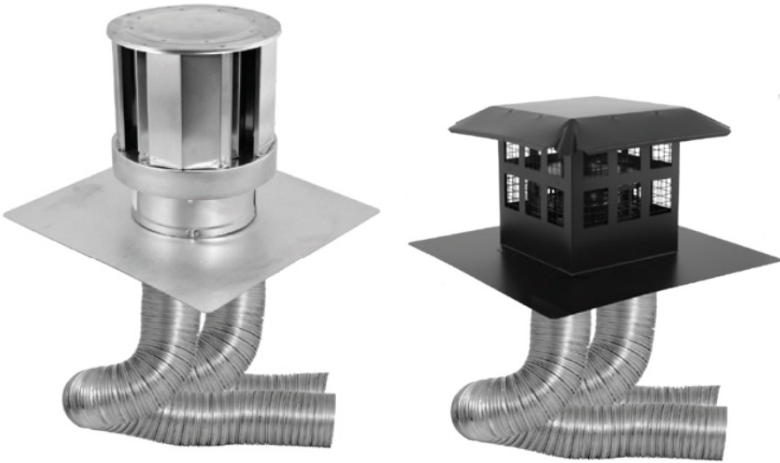


DIRECT-TEMP® Selkirk Direct Vent System

Installation Instructions

Co-Linear Insert Kit



Venting System For Direct Vent
Co-Linear Gas Inserts



CONTENTS

CERTIFICATION LABEL	3
INFORMATION AND WARNINGS	4-5
CONTENTS OF INSERT KIT	5
PLANNING YOUR INSTALLATION	5
MASONRY CHIMNEY INSTALLATION	5-7
GENERAL MAINTENANCE	8

A MAJOR CAUSE OF VENT RELATED FIRES IS FAILURE TO MAINTAIN REQUIRED CLEARANCES (AIR SPACES) TO COMBUSTIBLE MATERIALS. CHECK WITH THE APPLIANCE MANUFACTURER FOR CLEARANCE REQUIREMENTS.

IMPORTANT:

Read through all of these instructions before beginning your installation. Failure to install this product in accordance with these instructions will void the manufacturer's warranty, conditions of certification, and may affect your homeowner's insurance and safety listing of your appliance.

APPLICATION

This instruction applies to the Selkirk Direct-Temp termination system and is intended as a supplement to the applicable Direct-Temp Instructions. This termination and venting system, in combination with the gas appliance, has been tested and listed by an accredited test agency. Check the appliance manufacturer's rating plate and installation instructions to confirm the Selkirk Co-Linear Insert Kit is approved for use on the appliance you have selected.

Installer: It is of the utmost importance these instructions are left with the homeowner.

Homeowner: Keep these instructions in a safe place for future reference.

Selkirk Corporation
4460 44th Street S.E., Suite F
Grand Rapids, MI 49512
Toll Free: 1.800.VENT (8368)
info@selkirkcorp.com
www.selkirkcorp.com



Selkirk Canada Inc.
P.O. Box 526, Depot 1,
Hamilton, ON L8L 7X6
Toll Free: 1.888.SELKIRK (735.5475)
cscanada@selkirkcorp.com
www.selkirkcorp.ca

CERTIFICATION LABELS



Selkirk
4460 44th Street, Suite F
Grand Rapids, MI 49512



PRAIRIE CAP KIT

DIRECT VENT VENTING SYSTEM
THIS COMPONENT IS PART OF A VENT SYSTEM FOR USE ON DIRECT VENT GAS APPLIANCES WHICH COMPLY WITH ANSI Z21/CSA 2.33 - 2016 STANDARDS FOR VENTED GAS FIREPLACE HEATERS. SEE APPLIANCE RATING PLATE AND INSTRUCTION MANUAL FOR VENTING AND CLEARANCES TO COMBUSTIBLE REQUIREMENTS. WARNING - THIS PIPE IS INTENDED TO VENT GAS PRODUCTS ONLY. DUE TO A RISK OF CORROSION OR OVERHEATING, DO NOT USE TO VENT SOLID FUEL OR OIL FIRED APPLIANCES.

4DT-331K35VB



CEtte composante fait partie d'un système d'évacuation pour utilisation sur les appareils à gaz à évacuation directe qui sont conformes avec la norme ANSI Z21/CSA 2.33 - 2016 pour appareils de chauffage à gaz ventile. voir plaque signalétique de l'appareil et instruction pour déchargement par rapport aux exigences combustibles et autres requis. attention - ce conduit est destiné à l'évacuation des appareils au gaz seulement. en raison d'un risque de corrosion ou de surchauffe, ne pas utiliser pour évacuations des appareils à combustibles solides ou à l'huile.

1604653

Made in USA

DT



Selkirk
4460 44th Street, Suite F
Grand Rapids, MI 49512



CO - LINEAR INSERT KIT

DIRECT VENT VENTING SYSTEM
THIS COMPONENT IS PART OF A VENT SYSTEM FOR USE ON DIRECT VENT GAS APPLIANCES WHICH COMPLY WITH ANSI Z21/CSA 2.33 - 2016 STANDARDS FOR VENTED GAS FIREPLACE HEATERS. SEE APPLIANCE RATING PLATE AND INSTRUCTION MANUAL FOR VENTING AND CLEARANCES TO COMBUSTIBLE REQUIREMENTS. WARNING - THIS PIPE IS INTENDED TO VENT GAS PRODUCTS ONLY. DUE TO A RISK OF CORROSION OR OVERHEATING, DO NOT USE TO VENT SOLID FUEL OR OIL FIRED APPLIANCES.

4DT-331K35VB



CEtte composante fait partie d'un système d'évacuation pour utilisation sur les appareils à gaz à évacuation directe qui sont conformes avec la norme ANSI Z21/CSA 2.33 - 2016 pour appareils de chauffage à gaz ventile. voir plaque signalétique de l'appareil et instruction pour déchargement par rapport aux exigences combustibles et autres requis. attention - ce conduit est destiné à l'évacuation des appareils au gaz seulement. en raison d'un risque de corrosion ou de surchauffe, ne pas utiliser pour évacuations des appareils à combustibles solides ou à l'huile.

1604633

Made in USA

DT

WARNING

Failure to follow the installation instructions could cause **FIRE, CARBON MONOXIDE POISONING, OR DEATH**. If you are unsure of installation requirements, call the Phone Number listed on the instructions or visit www.selkirkcorp.com.

Selkirk DIRECT-TEMP Colinear Insert Kit provides a Vertical Cap with a built-in Co-Linear Adapter at the base and a baseplate to serve as a flashing. The Kit also includes 2 Lengths of flexible liner. See Table 1 for more information.

Selkirk DIRECT-TEMP is designed to be the vent and air intake system for an approved list of direct vent gas appliances. It is approved for use also with Amerivent Direct-Vent.

Selkirk DIRECT-VENT materials, design, and these instructions have been evaluated and listed by Underwriters Laboratory Inc.

Contact local building or fire officials about restrictions and installation inspections in your area, and obtaining building permits before beginning the installation.

Do not install Selkirk DIRECT-VENT without first carefully reading the main instructions and the appliance manufacturer's instructions. If you still have any doubt about your ability to complete the installation in a safe manner after reading these instructions, arrange for a professional installation.

Selkirk DIRECT-TEMP is for use only with appliances that are certified or listed by a major qualified testing agency, such as AGA, CSA, OMNI, UL, or Warnock Hersey.

Selkirk warranty coverage will be null and void, and serious fire, health, or other safety hazards may result from any of the following actions:

- Installation of any damaged Chimney Liner System;
- Unauthorized modifications of the Chimney Liner System;
- Installation of any component part not manufactured or approved by Selkirk.
- Installation other than as instructed by Selkirk and the appliance manufacturer.

ATTENTION:

Always maintain required clearances (air spaces) to nearby combustibles to prevent a fire hazards. Be sure to check the appliance manufacturer's installation instructions for minimum clearance requirements between the outer walls of the vent pipe/liner system and nearby combustible surfaces. Be sure to check the vent termination clearance requirements from doors, windows, soffits, gas regulators, and air supply inlets, as specified in local building codes.

The gas appliance and vent system must be vented directly to the outside of the building, and never be attached to a chimney serving a separate solid fuel or gas-burning appliance. Each direct vent gas appliance must use its own venting system. Common venting are prohibited.

Always wear eye protection and heavy gloves for protection.

Exercise extreme caution when using ladders or on rooftops.

Check overhead for power lines, antennas or other obstacles.

Make sure the inside of the masonry or factory-built chimney is large enough to accommodate two (2) flex liners (3"3/8" or 4"3/8").

Make sure the masonry chimney is sound in construction, clean and free from all loose and potentially flammable debris. If you find any cracks, loose or missing bricks or tiles, repair or replace.

Before the installation of the liners, it is recommended that the chimney be cleaned by a certified chimney sweep.

Since chimneys are usually very sooty and dusty, it is advisable to remove or cover your furniture, rugs etc. for the duration of the cleaning and installation of the liner.

Masonry chimneys may take various contours which the flexible liner will accommodate. However, keep the flexible liner as straight as possible, avoid unnecessary bending. Due to possible snagging, which may result in some

surface damage, caution must be observed when lowering liner lengths into the masonry flue.

The top section of the masonry must be watertight to prevent moisture from entering the masonry chimney and causing damage. Consult the local building authority for more information on how to seal the damages or unused masonry section.

Table 1 - Contents of Insert Kits	
Part Number	Description
*4DT-33IK35VB	Insert Co-Linear Kit (3"/3")
*4DT-33IK35VBP	Includes: 2 - 3" x 35' aluminum flex lengths, 1 - *Co-Linear Cap 3"/3", 1 - Hardware pack (screws and hose clamps), 1 - Installation Instructions.
*4DT-34IK35VB	Insert Co-Linear Kit (4"/3")
*4DT-34IK35VBP	Includes: 1 - 4" x 35' aluminum flex length, 1 - 3" x 35' aluminum flex length, 1 - *Co-Linear Cap 4"/3", 1 - Hardware pack (screws and hose clamps), 1 - Installation instructions.

**NOTE: VB Co-Linear kits includes the High Wind Cap and the Prairie Cap is in the VBP Co-Linear kits (see Table 1).*

PLANNING YOUR INSTALLATION:

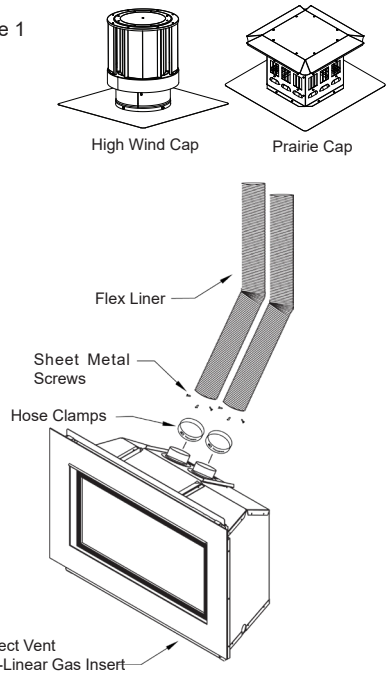
The DIRECT-TEMP Co-Linear Insert Kit was designed to be installed in an existing masonry or factory-built chimney, and connected to a direct vent co-linear gas insert (see Figure 1) or other appropriate direct vent gas appliance.

It is important to carefully measure the length of flex needed to reach from the appliance outlet to the Co-Linear Cap.

If the flex length is too short, a Flex Coupler (Figure 3) will be needed to attach an additional length of flex liner. On the exhaust side, high temperature silicone needs to be applied.

If the flex length is too long, the liner could sag below the appliance outlet which could result in a potential fire hazard.

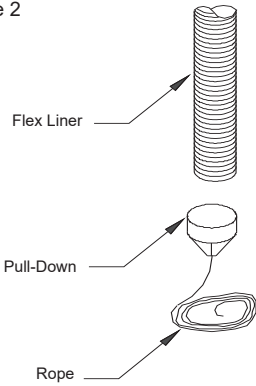
Figure 1



Masonry Chimney Installation:

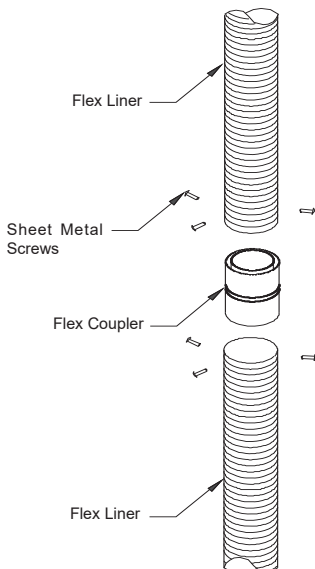
1. Measure the distance between the top of the masonry chimney and the gas appliance, allowing for any required bends.
2. Select the lengths necessary to accommodate the required distance determined above. Stretch the flexible liners to the desired lengths (requires 2 people) by placing both hands around the circumference of the ends of the liners and gently pulling. If any flexible liners requires cutting, use a sharp fine-toothed hacksaw.
3. The exhaust flex length is identified with red tape at both ends. Use the flex length with no red tape as the air intake flex length. If the flex liners are unidentified, mark each liner at the top and bottom as either exhaust or intake to prevent confusion later.
4. Insert a rope through the end of the Pull-Down and tie a knot at the end of the rope. Attach the Pull-Down to the Flex Liner using four sheet metal screws as shown (Figure 2). Carefully feed the liner down the chimney (Figure 4) one at a time (masonry or factory-built) and out through the damper.

Figure 2



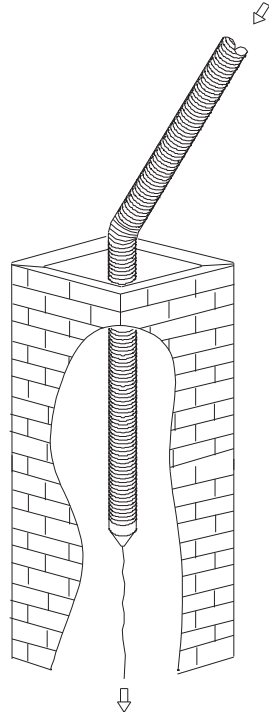
Be careful when passing through the damper not to damage the flex liner. One person should feed the liner through the chimney, and another person should pull the liner from the bottom, using the rope to guide the liner through to the chimney bottom. Note: If additional lengths of Flex Liner are needed to span the chimney height, use a Flex Coupler to connect the pieces of Flex Liner together. Connect the flex to the coupler by using four sheet metal screws for each side (see Figure 3). Apply high temperature sealant on the exhaust side.

Figure 3



5. After carefully feeding the Flex Liner down the chimney to the bottom, form an angle to line up the Flex Liner with the vent opening on the appliance. Important: Do not let the Flex Liner sag below the level at which it will connect to the appliance or connector. This could allow hot gas to become trapped and potentially become a fire hazard. The Flex Liner path should always be sloped up toward the Co-Linear Cap.

Figure 4



6. Remove the Flex Pull-Down from the Flex Liner and temporarily secure the Flex Liner at the top of the chimney. Be sure to leave 2-3 inches of flex above the existing chimney to allow for connection to the Co-Linear Cap (see Figure 5).

7. Repeat the above steps for the second length of flex.

Figure 5

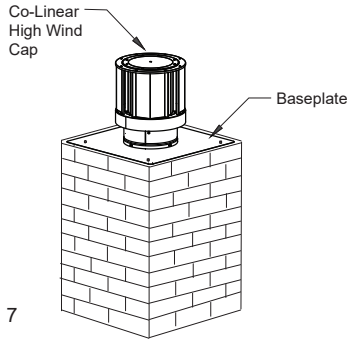
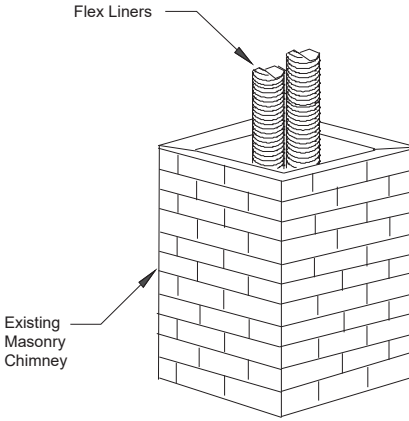


Figure 7

10. Apply a bead of silicone sealant to the top of the masonry chimney prior to securing the baseplate of the Co-Linear High Wind Cap to the masonry chimney. Secure Co-Linear High Wind Cap to masonry chimney with suitable fasteners (one at each corner) and cover the heads with silicone sealant (Figures 6 & 7).

8. Prepare the baseplate of the Co-Linear High Wind Cap. If it is larger than the top of the chimney, cut and fold as needed for a perfect fit. Do not seal in place at this time.

9. Attach the flex liner ends at the top of the chimney to the Co-Linear High Wind or Prairie Cap. Apply high temperature silicone to the exhaust liner prior to connecting to the Cap. Secure each length of flex liner to the Co-Linear Cap. The small screws provided with the hose clamps can be used for extra security per length (Figure 6).

11. Connect both of the flex directly to the appliance flue collars (Figure 8). See the appliance manufacturer's instructions for details. Secure the two Flex Liner runs to the appliance. The small screws provided with the hose clamps can be used for extra security per length. Apply high temperature sealant on the exhaust side. In any case, make sure the Flex Liners do not sag behind the appliance. Finally, move the appliance into its appropriate place.

Figure 8

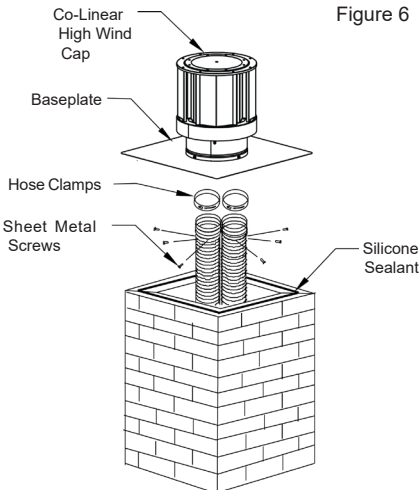
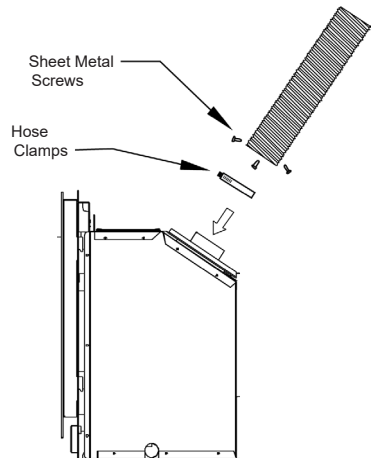


Figure 6



GENERAL MAINTENANCE

Conduct an inspection of the venting system twice a year.

Recommended areas to inspect are as follows:

1. Check areas of the Venting System which are exposed to the elements for corrosion. These will appear as rust spots or streaks, and in extreme cases, holes. These components should immediately be replaced.
2. Remove the cap and remove any bird nests, or other foreign material.
3. Check for evidences of excessive condensate, such as water droplets forming in the liners, and subsequently dripping out at joints. Continuous condensate can cause corrosion of caps, liners, and fittings. It may be caused by having exterior portions of the system being exposed to cold weather.