



Selkirk gas vent parts listed and produced under the Factory Inspection and Follow-up program of Underwriters' Laboratories, Inc. carry the LISTING MARK illustrated here.



**CAUTION: WEAR GLOVES WHILE HANDLING SHEET METAL PARTS TO AVOID PERSONAL INJURY. SHARP EDGES OR PROJECTIONS CAN CUT YOU.**

Refer to the main installation instructions for complete details about installing the vent system. The main installation instructions are packaged with the Top or can be obtained by calling one of the telephone numbers listed at the bottom of this sheet.

**SIZES AVAILABLE/ USAGE**

Male and female Universal Adapters are available in 3" through 8" ID sizes. Universal male adapters may be used to adapt to the top (outlet) end of a compatible round, Type B gas vent section, in order to continue the system toward the termination with Selkirk joint coupling design.

Universal female adapters may be used to adapt to the bottom (inlet) end of a compatible Type B gas vent in order to continue the system toward the appliance using Selkirk round gas vent. The bottom end of the adapter incorporates the Selkirk joint coupling design.

**Compatibility**

These fittings have been specifically evaluated and listed for use in adapting to the following manufacturers' round Type B gas vents.

- Simpson DuraVent
- American Metal Products Company
- Metal-Fab
- General Products Company (Air Jet)
- Security

The following Type B gas vent products are directly compatible with Selkirk 3" through 8" Type B gas vent and require no adapters.

- Selkirk (current and former)
- Household Mfg. HVAC
- Eljer HVAC
- AirMate
- Hart & Cooley

**MALE ADAPTER - INSTALLATION**

The male adapter is a fitting designed to slide (telescope) down over the top end of the adjacent gas vent section with the inner, aluminum liner sliding inside the existing liner and the outer wall sliding outside (over) the outer wall (See Fig. 1A).

Longer (12" and 18") versions of the universal male adapter are offered as "Adjustable Lengths" for use either (1) in adapting to another manufacturer's gas vent or (2) in conjunction with another length section to develop an assembly of a specific dimension.

TO INSTALL - Slide the adapter over the top (outlet) end of the adjacent gas vent being sure the aluminum inner wall slides within and the outer slides over the top. Push the adapter down until it overlaps at least 1-1/2".

Using the holes in the outer wall of the adapter as a guide, drill two holes through in the outer wall (only) of the gas vent. Be careful not to penetrate the inner liner of the gas vent. Secure the adapter to the gas vent section with two 1/4" length maximum sheet metal screws (provided).

The top (outlet) end of the system has now been converted to the

# Round Type B Gas Vent

## MALE AND FEMALE UNIVERSAL ADAPTERS

### Installation Instructions

**FEMALE ADAPTER - INSTALLATION**

The female adapter is a fitting with a top end designed to slide over the outer wall of the bottom (inlet) end of the adjacent gas vent section. (See Fig. 1B)

TO INSTALL - Guide the top end of the adapter over the bottom (inlet) end of the adjacent gas vent being sure that the aluminum inner wall of the existing vent section slides inside the inner liner of the adapter and the outer wall of the adapter slides up and around the inlet end of the adjacent gas vent piece. Push the adapter up until it overlaps at least 1-1/2". Securely tighten the nut and bolt using a screwdriver and/or pliers. The bottom (inlet) end of the system has now been converted to the Selkirk joint coupling system.

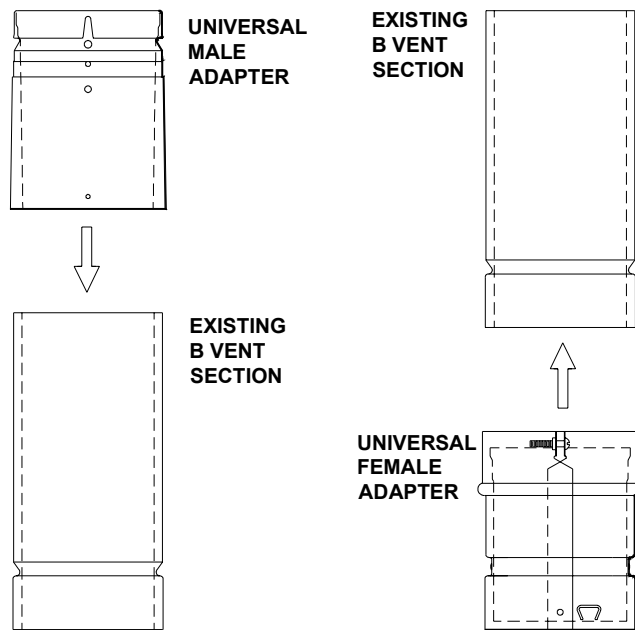


FIG. 1A

FIG. 1B

**FIG. 1 CONNECTION OF UNIVERSAL ADAPTERS**

**WARNING**

**Failure to follow the installation instructions could cause FIRE, CARBON MONOXIDE POISONING, OR DEATH. If you are unsure of installation requirements, call the Phone Number listed on the instructions, 1.800.443.6341 or visit [www.selkirkcorp.com](http://www.selkirkcorp.com).**